

Subject Information

Name: Negar Rahimi

Subject ID:

Date of Birth:

Age: 14.00

Gender: F

Handedness: R

EEG ID: Startdate 22-SEP-2025 X X Sarmad

Date of Test: 09/22/25

Time of Test: 12:39:13

Technician: Nasr

Eyes Condition: Eyes Open

Clinician:

Medication:

Comments:

Technical Information

Record Length: 05:00

Edit Length: 02:43

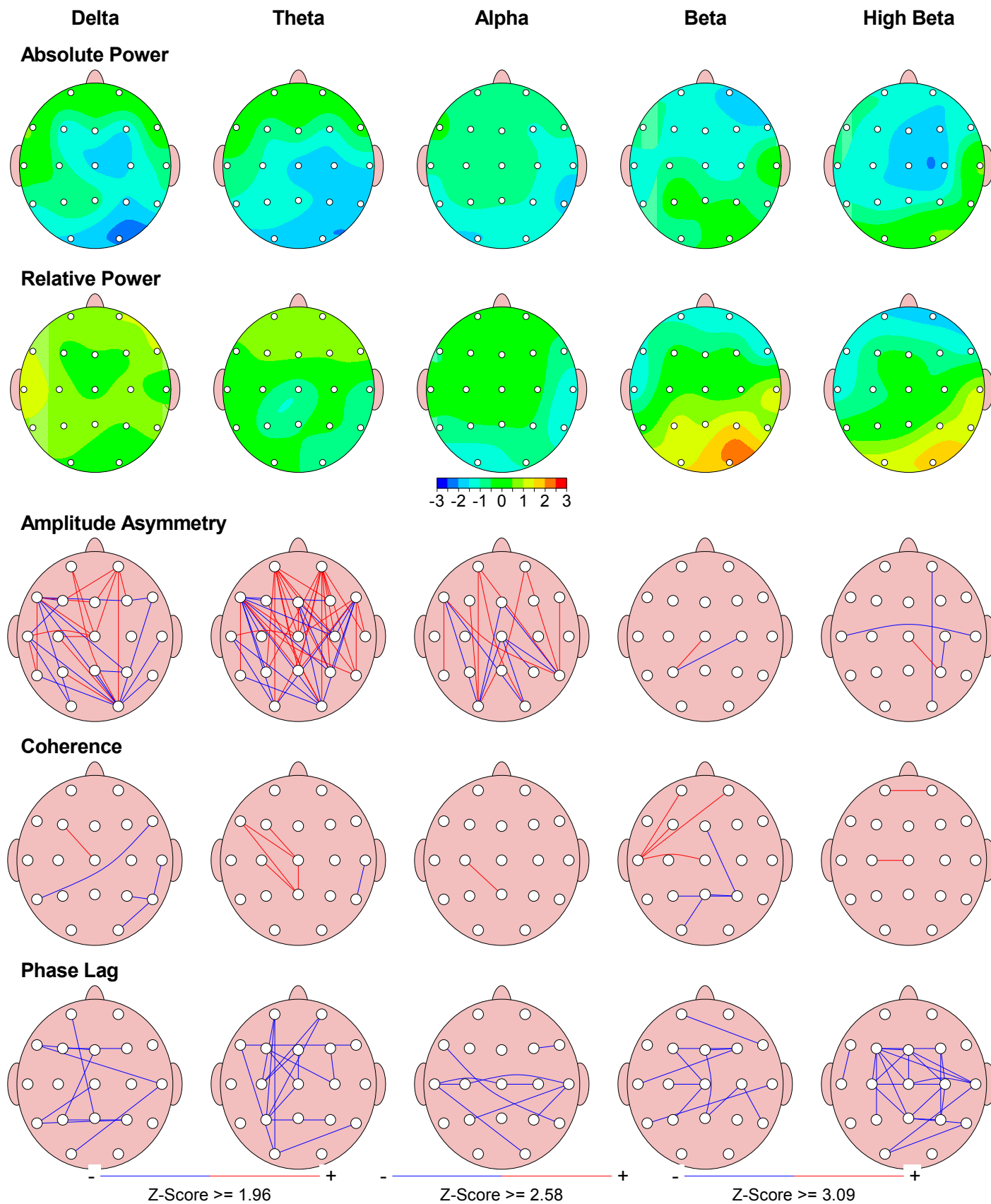
Reliability:

| | Split Half | Test Retest |
|---------|------------|-------------|
| Average | 0.99 | 0.94 |
| FP1 | 1.00 | 0.97 |
| FP2 | 0.98 | 0.92 |
| F3 | 0.99 | 0.94 |
| F4 | 1.00 | 0.94 |
| C3 | 0.99 | 0.90 |
| C4 | 0.99 | 0.91 |
| P3 | 1.00 | 0.90 |
| P4 | 1.00 | 0.93 |
| O1 | 1.00 | 0.84 |
| O2 | 0.99 | 1.00 |
| F7 | 0.99 | 1.00 |
| F8 | 0.99 | 0.99 |
| T3 | 1.00 | 0.92 |
| T4 | 0.99 | 0.99 |
| T5 | 1.00 | 0.88 |
| T6 | 0.97 | 0.99 |
| Fz | 0.98 | 0.95 |
| Cz | 0.99 | 0.90 |
| Pz | 0.99 | 0.91 |

Sampling Rate: 128

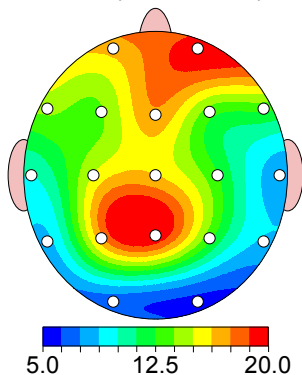
Collection Hardware: Unknown

Z Scored FFT Summary Information

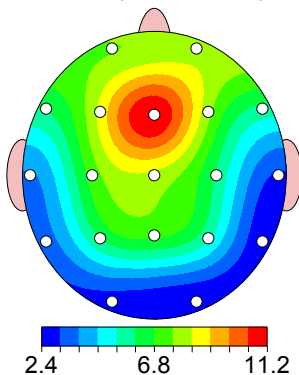


FFT Absolute Power (uV Sq)

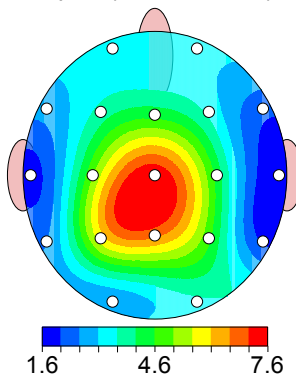
Delta (1.0 - 4.0 Hz)



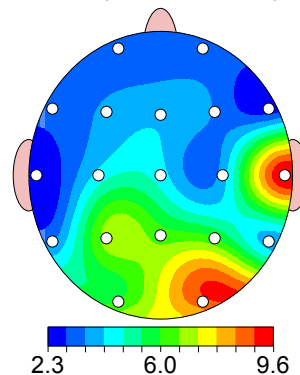
Theta (4.0 - 8.0 Hz)



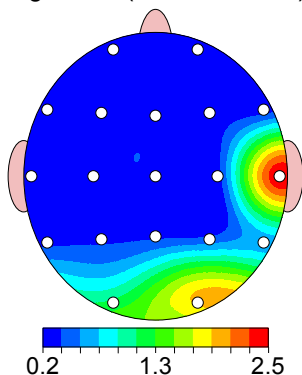
Alpha (8.0 - 12.0 Hz)



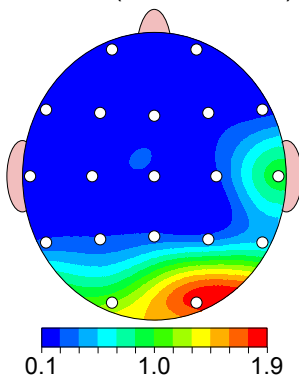
Beta (12.0 - 25.0 Hz)



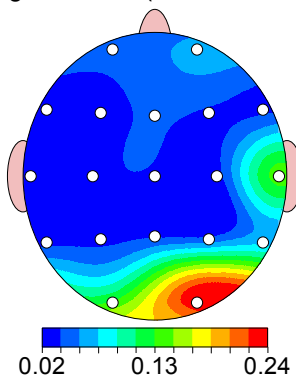
High Beta (25.0 - 30.0 Hz)



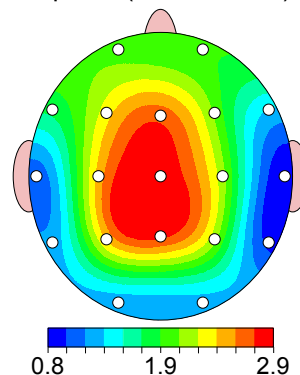
Gamma (30.0 - 40.0 Hz)



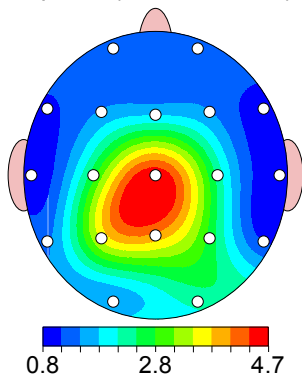
High Gamma (40.0 - 50.0 Hz)



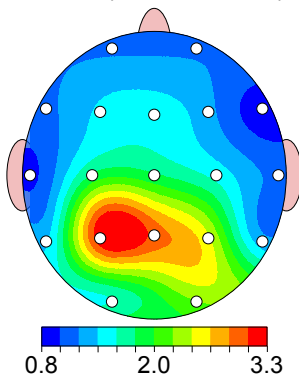
Alpha 1 (8.0 - 10.0 Hz)



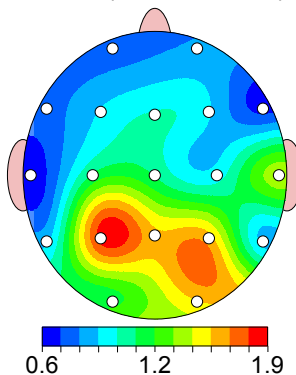
Alpha 2 (10.0 - 12.0 Hz)



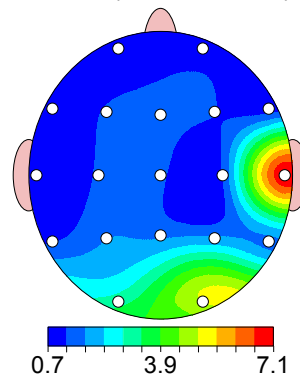
Beta 1 (12.0 - 15.0 Hz)



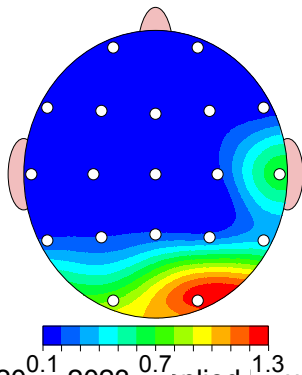
Beta 2 (15.0 - 18.0 Hz)



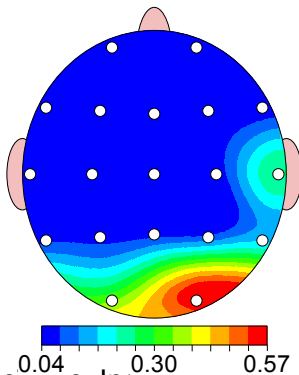
Beta 3 (18.0 - 25.0 Hz)



Gamma 1 (30.0 - 35.0 Hz)

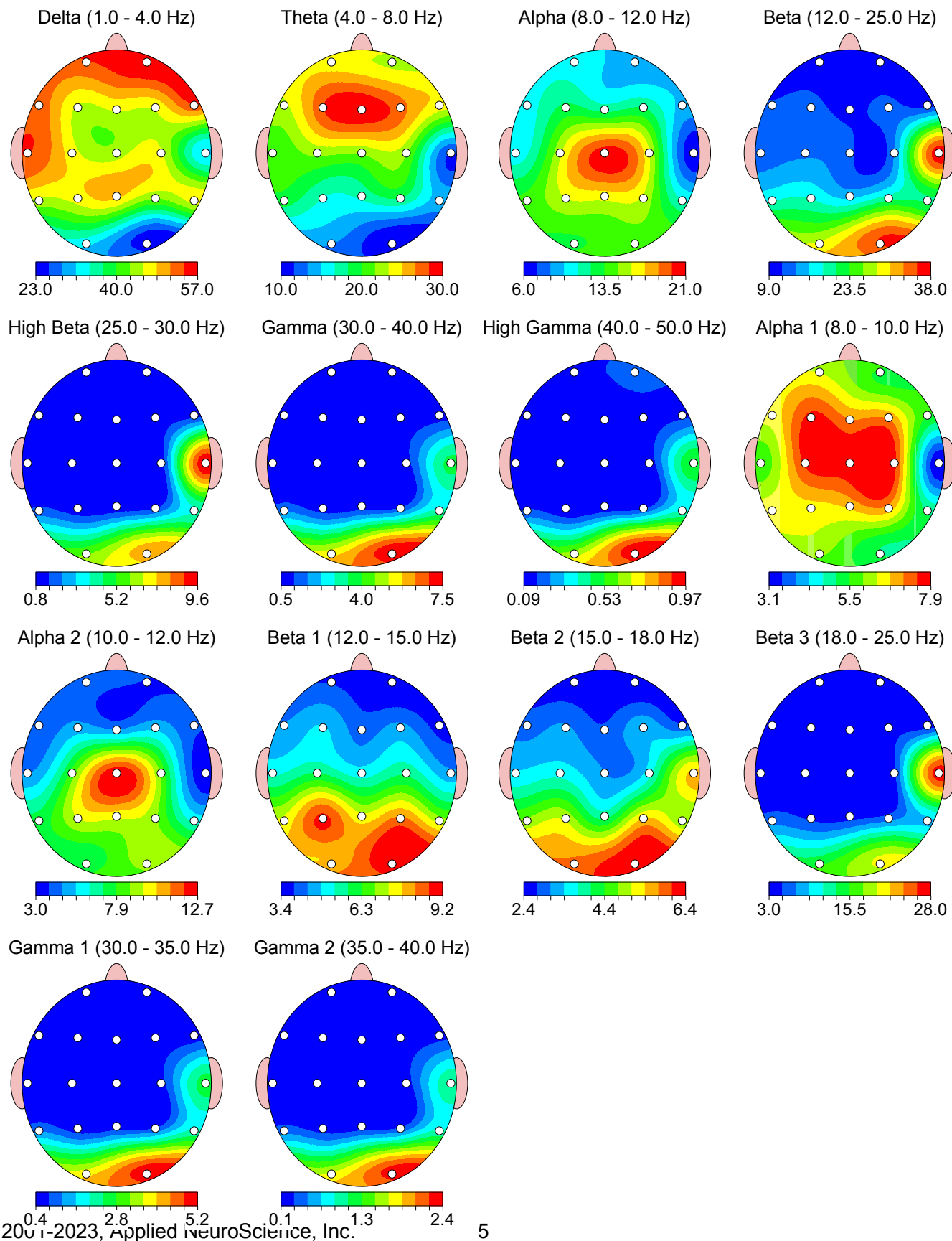


Gamma 2 (35.0 - 40.0 Hz)

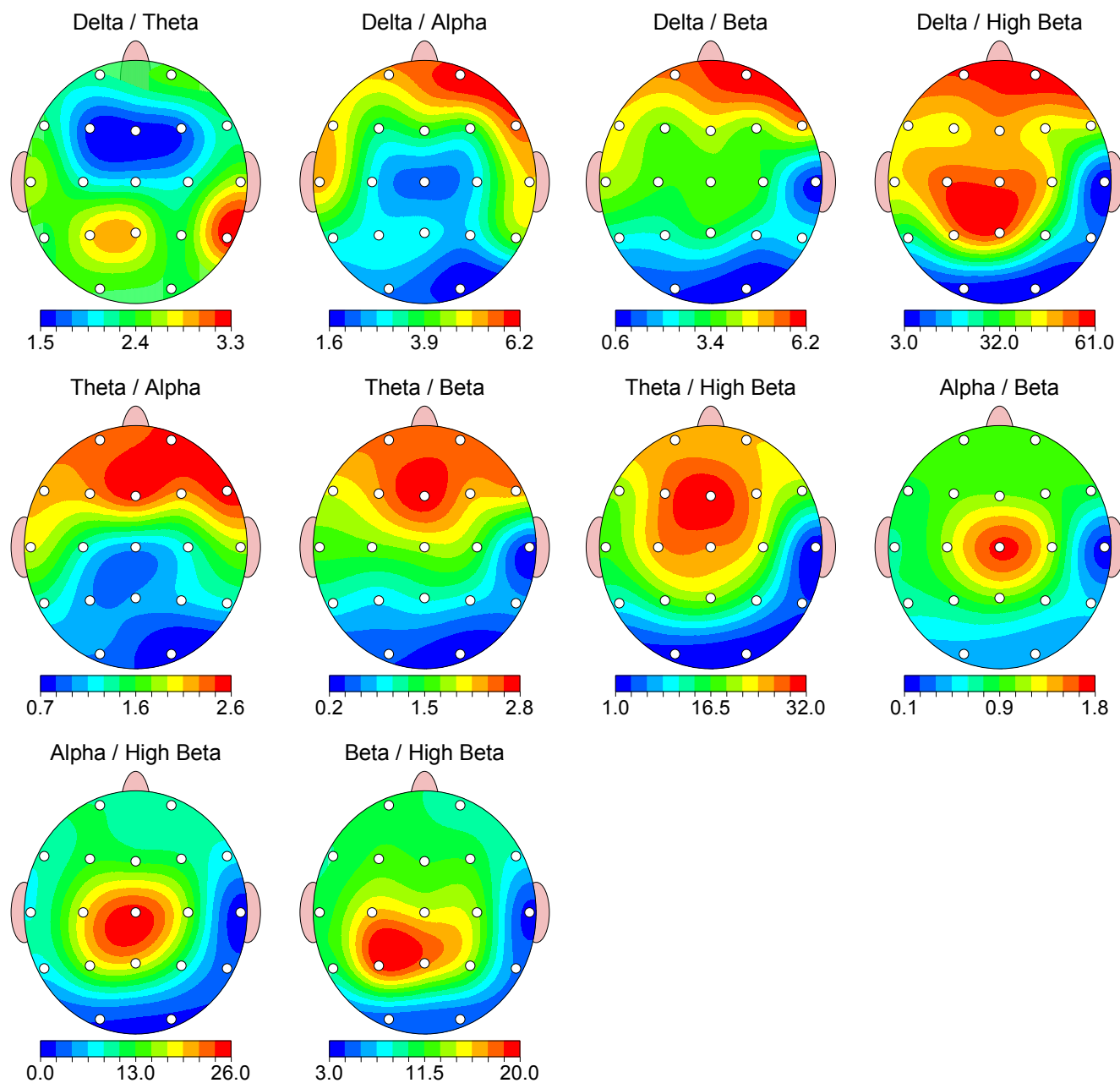


FFT Relative Power (%)

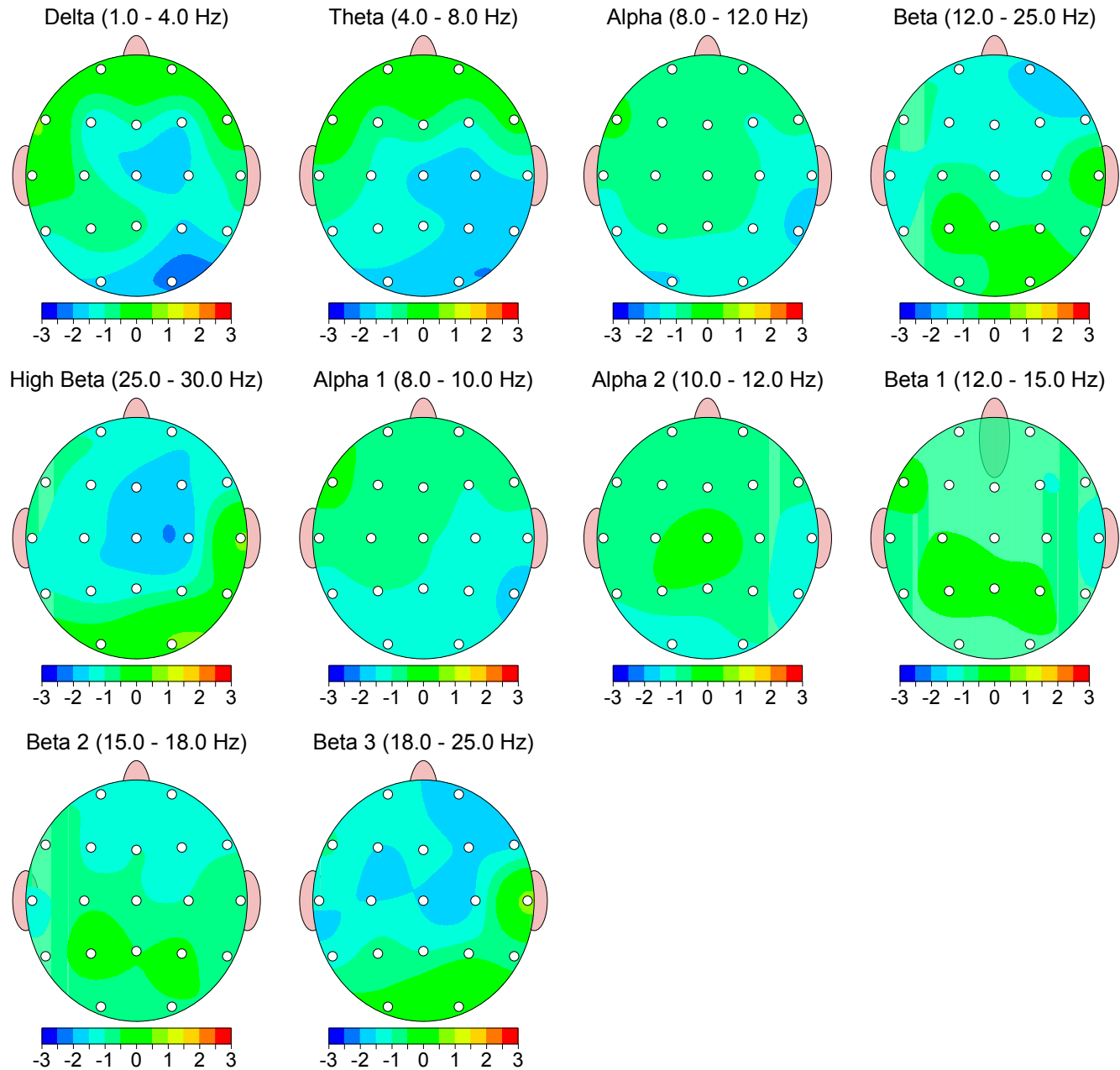
Warning: Absolute power must be consulted to interpret relative power.



FFT Power Ratio

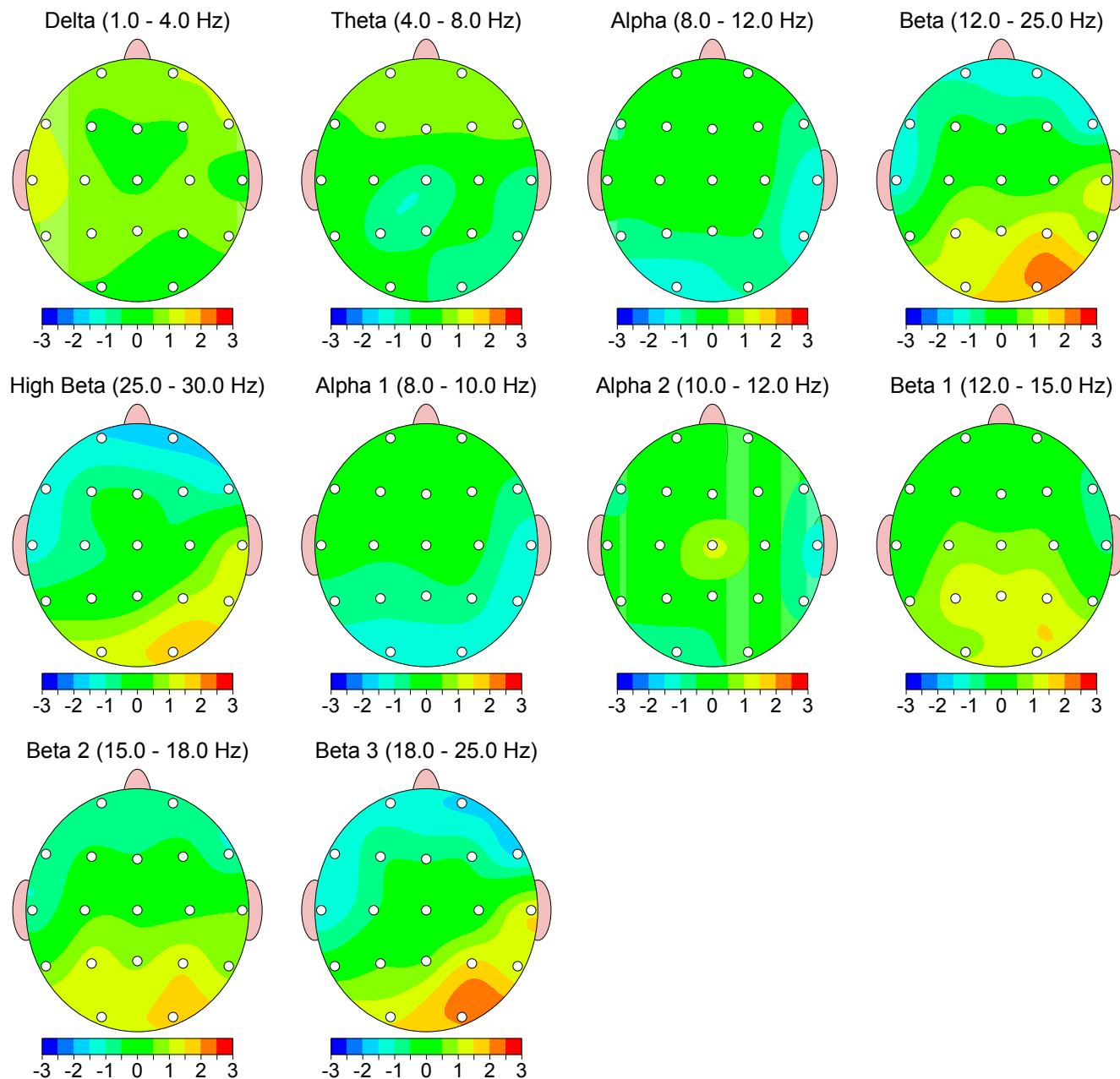


Z Scored FFT Absolute Power

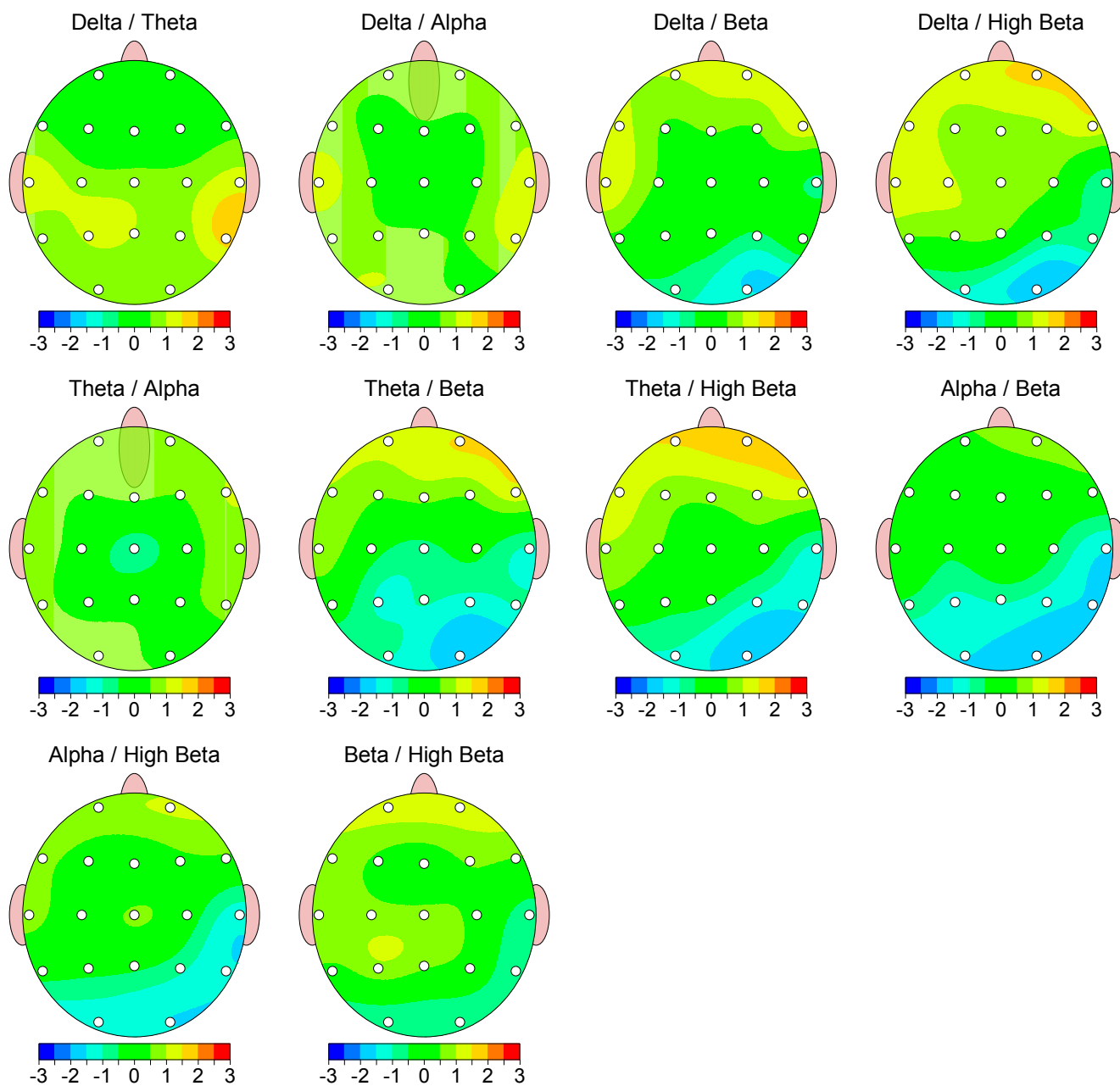


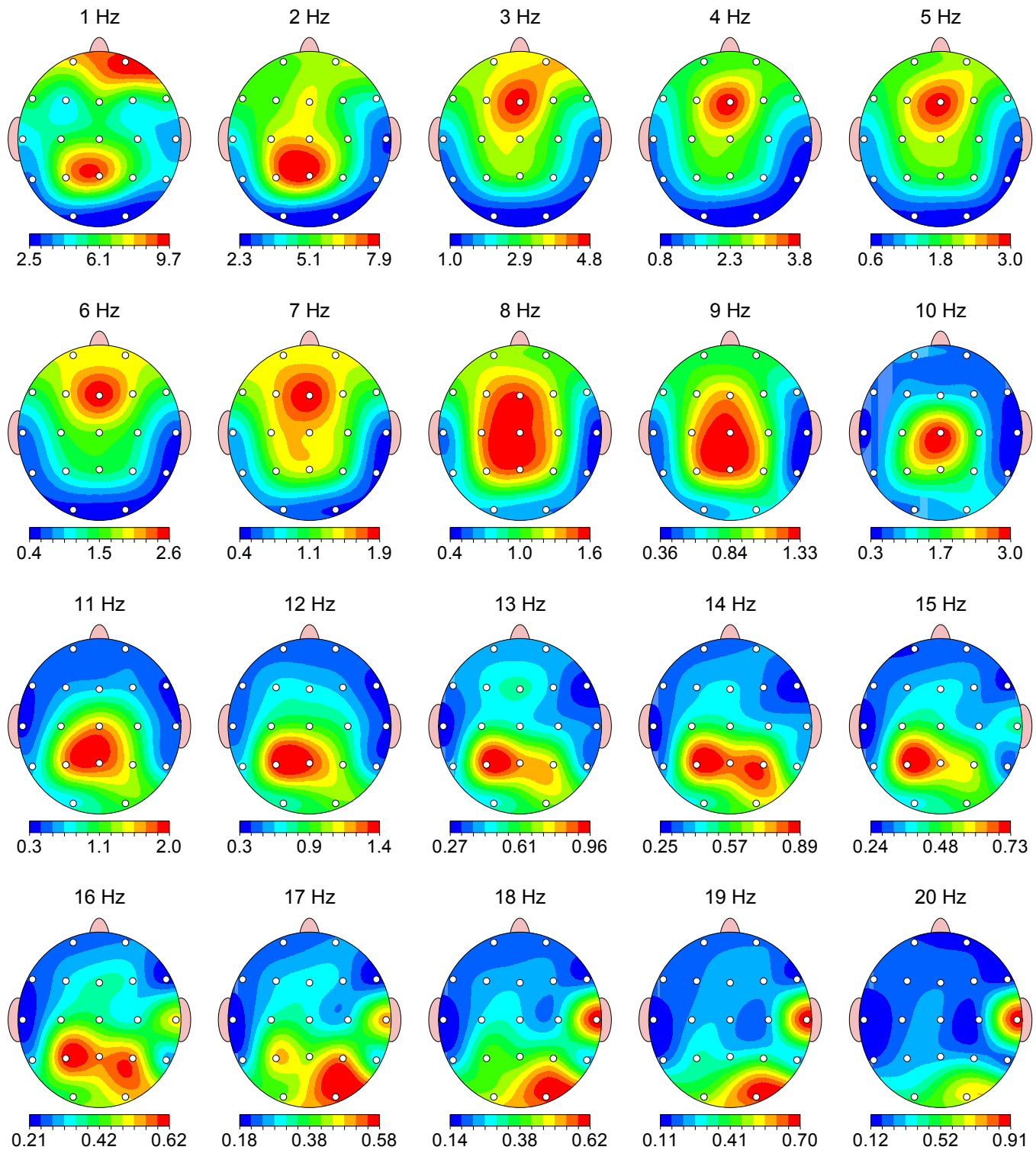
Z Scored FFT Relative Power

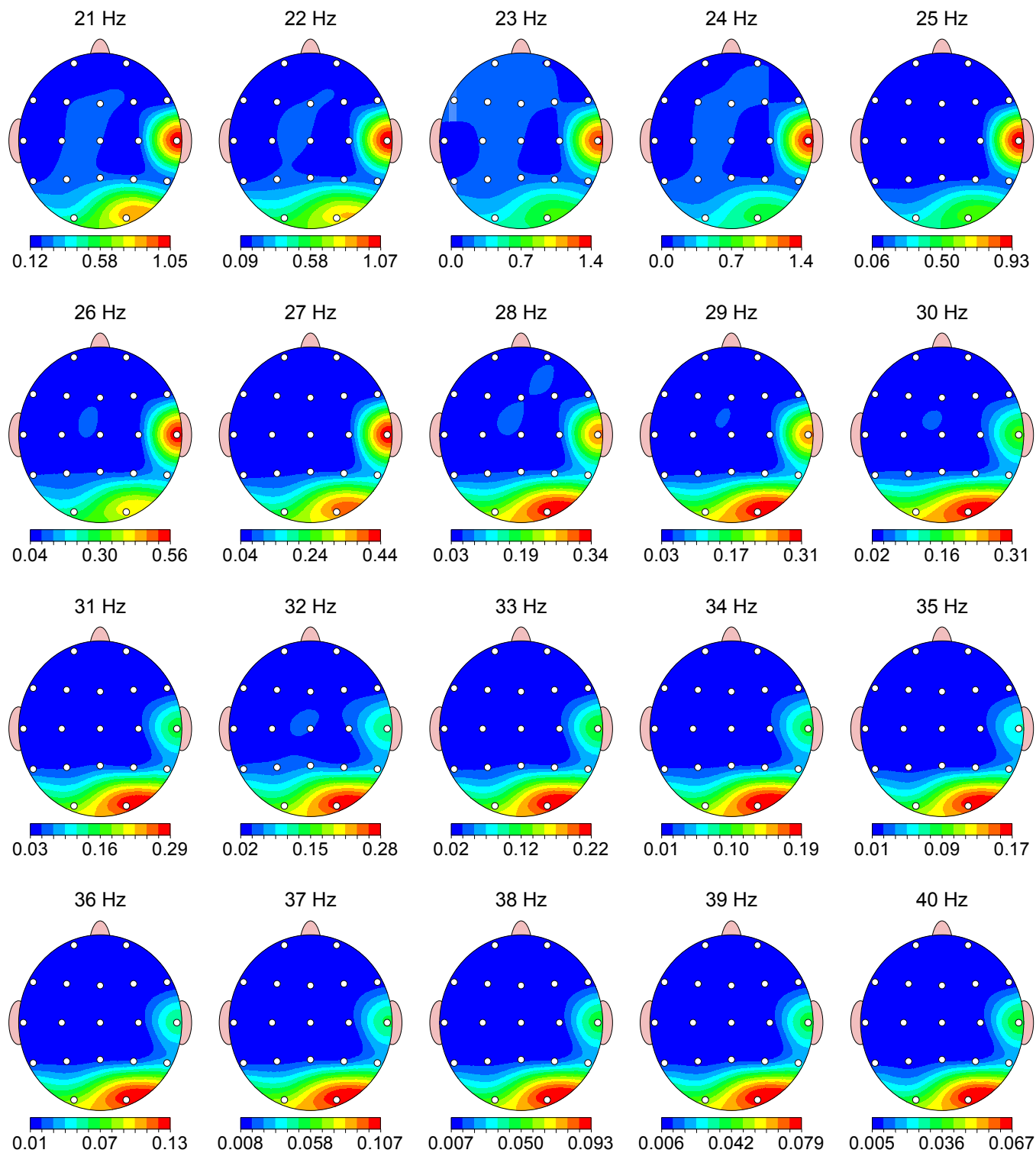
Warning: Absolute power must be consulted to interpret relative power.



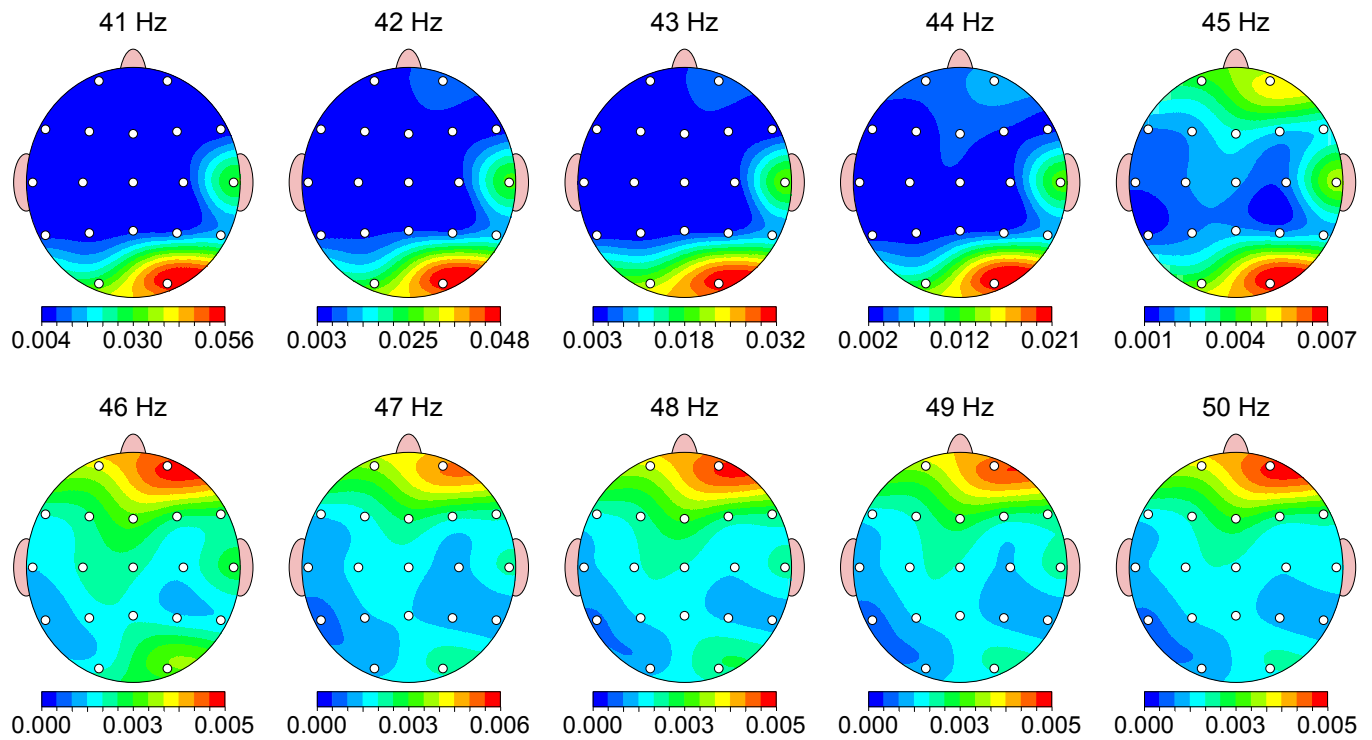
Z Scored FFT Power Ratio



FFT Absolute Power ($\mu\text{V Sq}$)

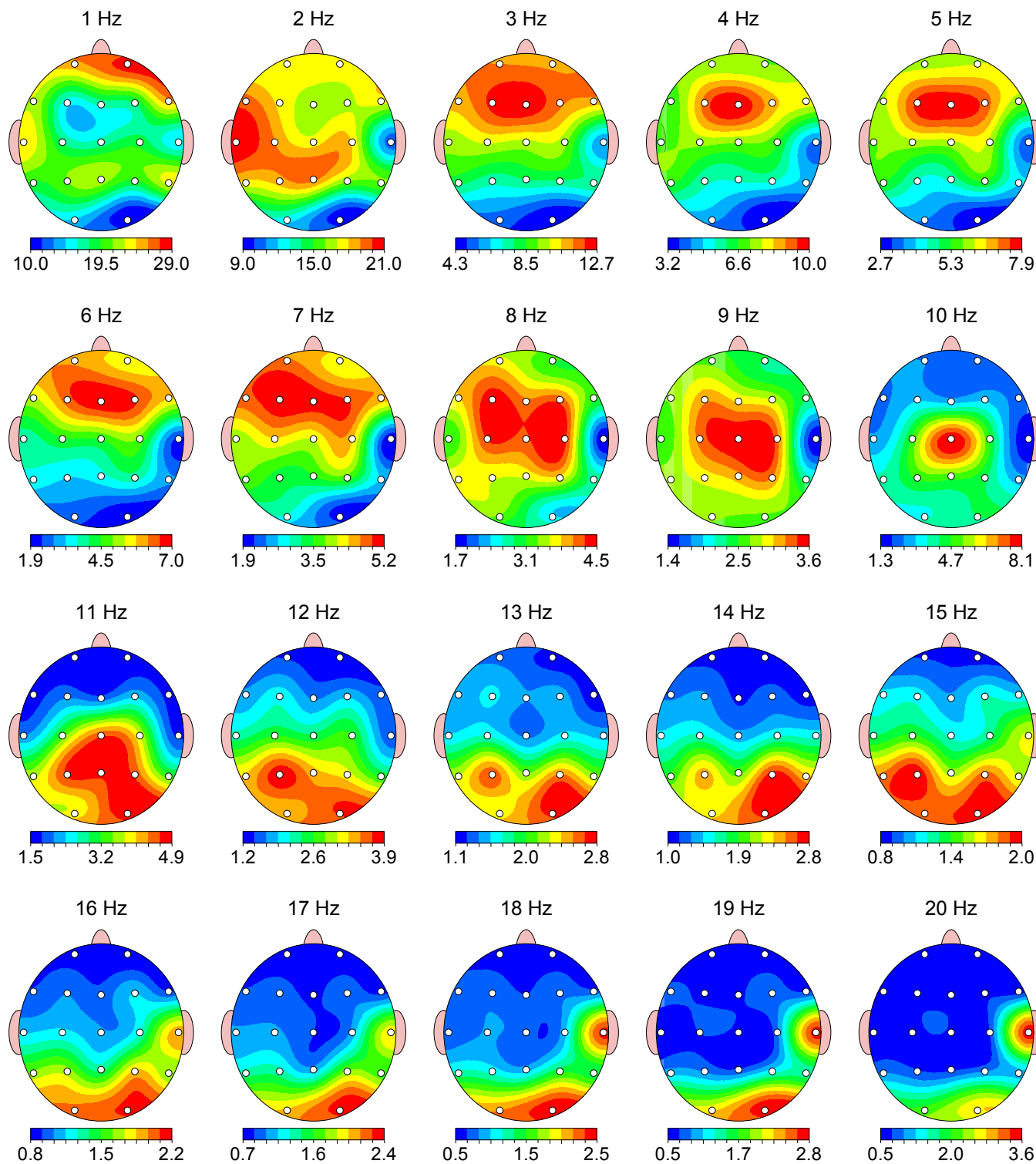
FFT Absolute Power ($\mu\text{V Sq}$)

FFT Absolute Power ($\mu\text{V Sq}$)



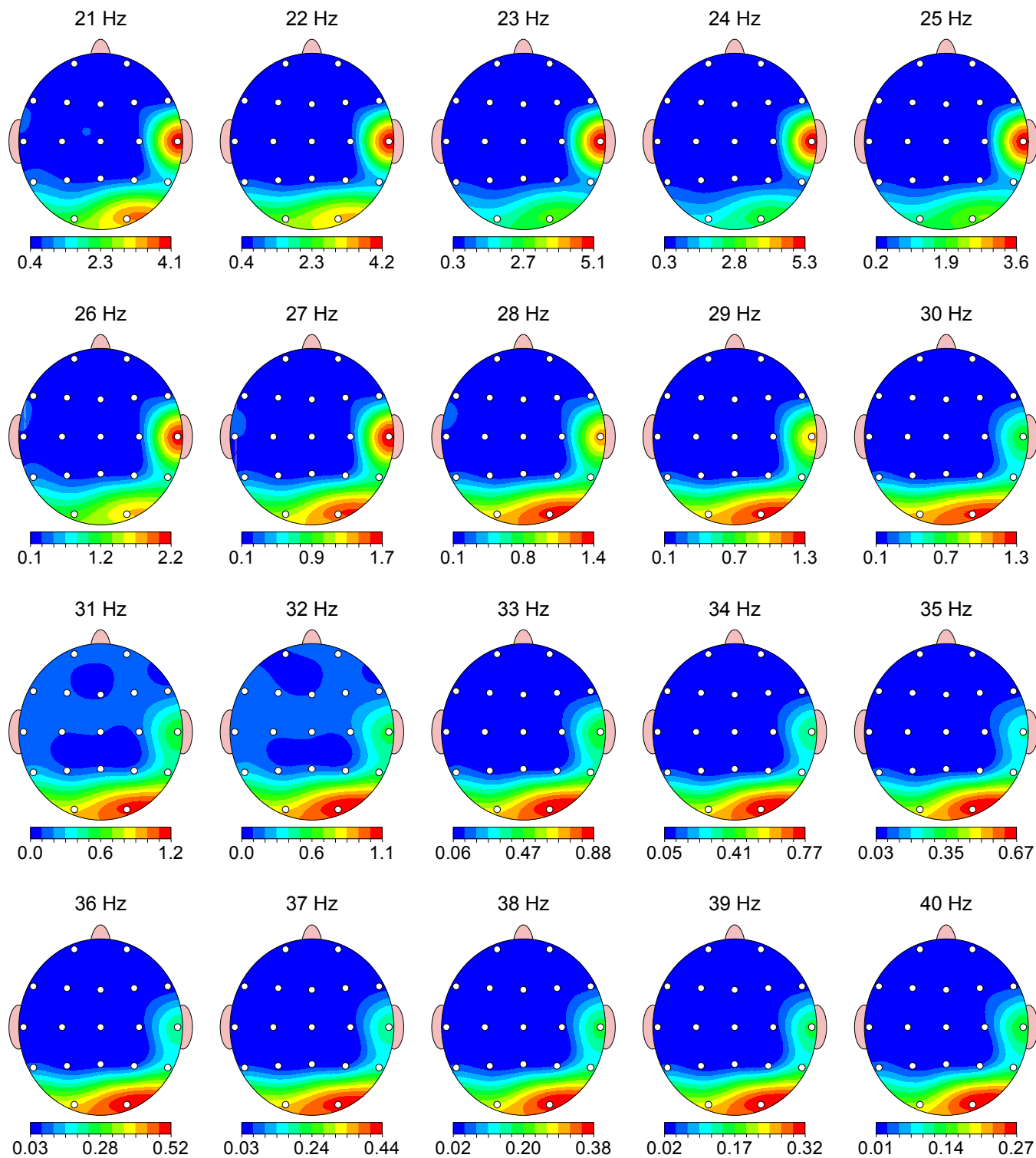
FFT Relative Power (%)

Warning: Absolute power must be consulted to interpret relative power.



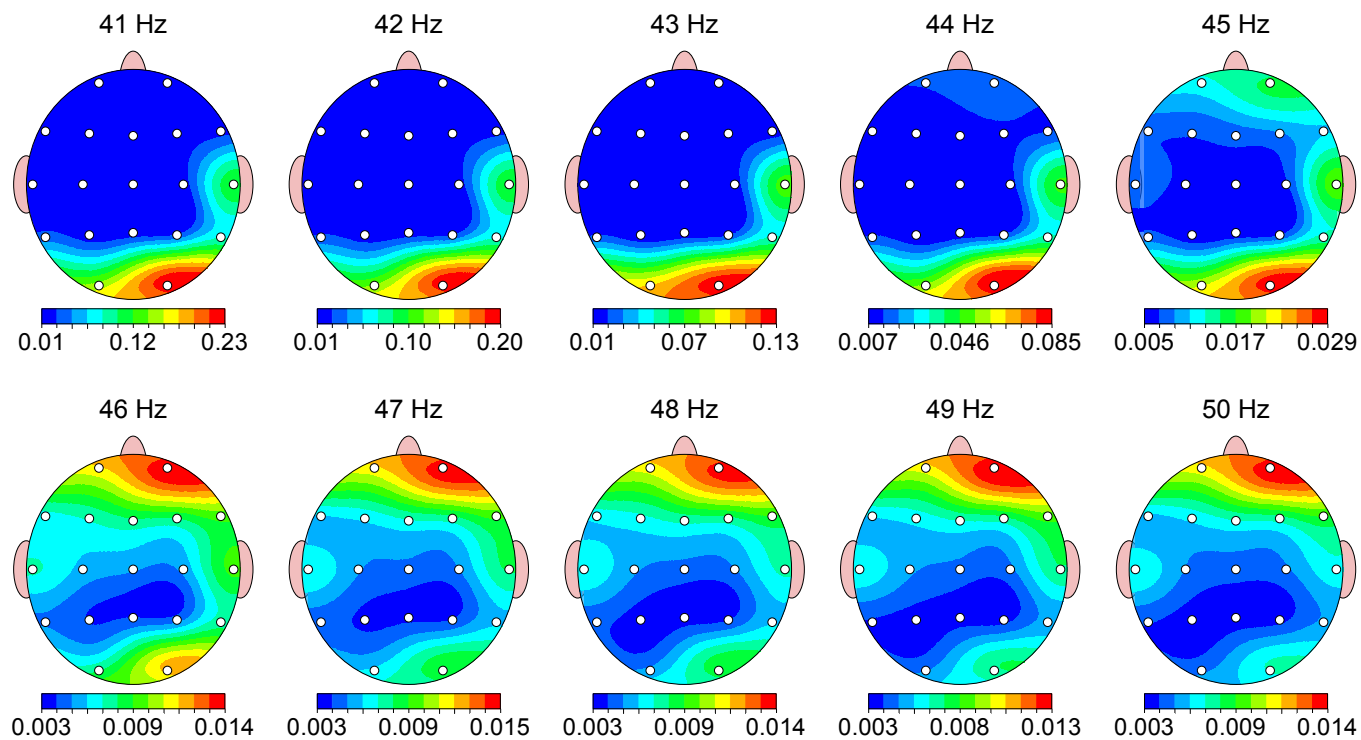
FFT Relative Power (%)

Warning: Absolute power must be consulted to interpret relative power.

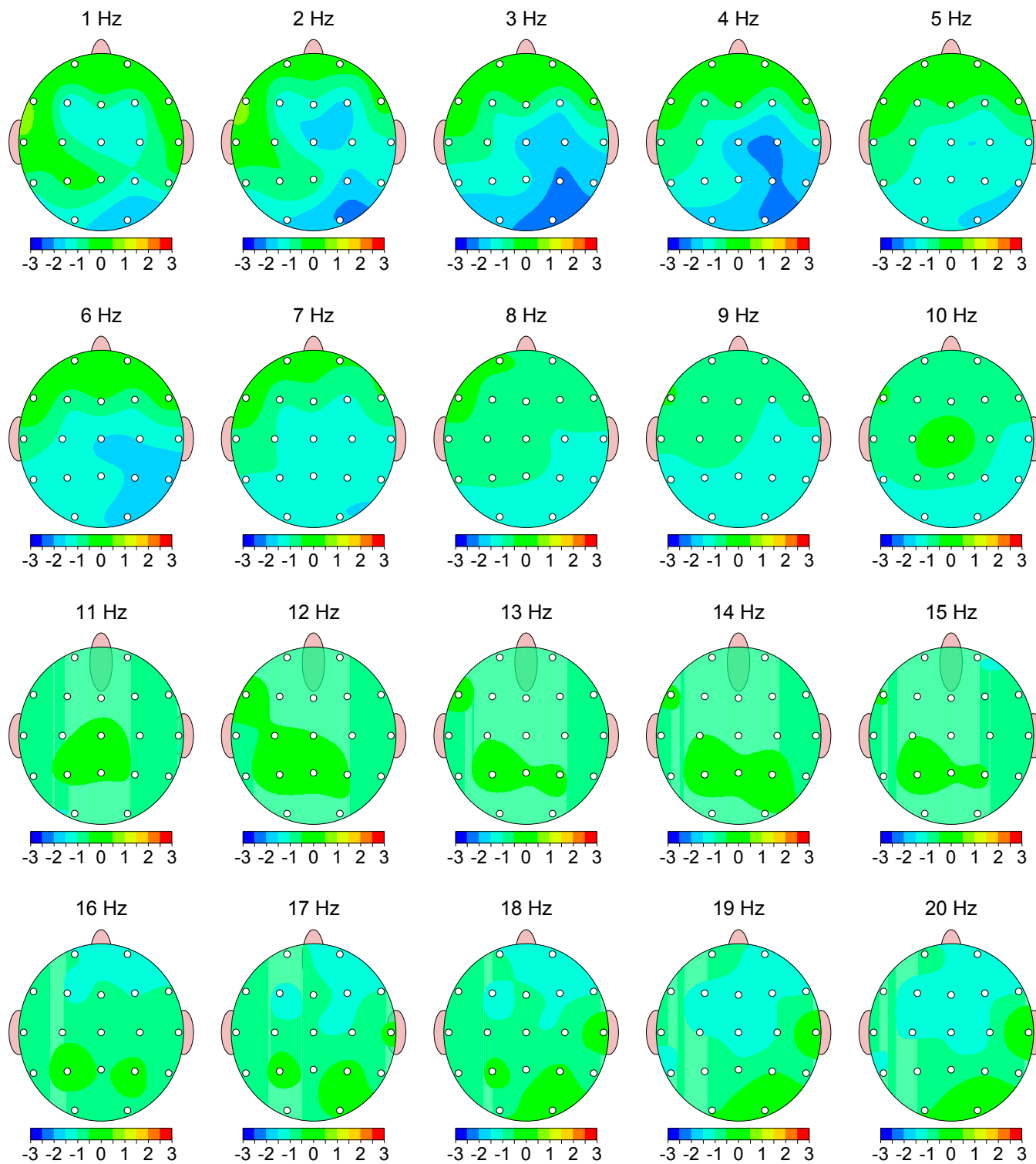


FFT Relative Power (%)

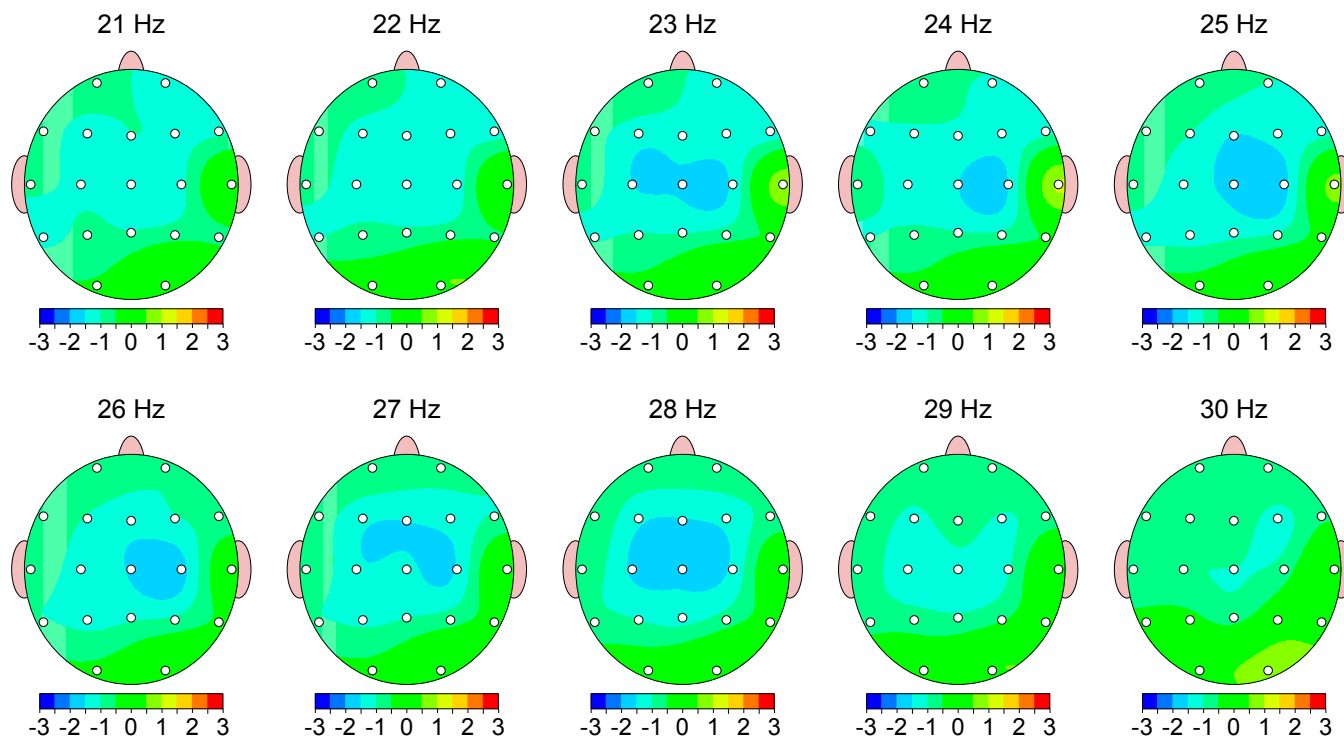
Warning: Absolute power must be consulted to interpret relative power.



Z Scored FFT Absolute Power

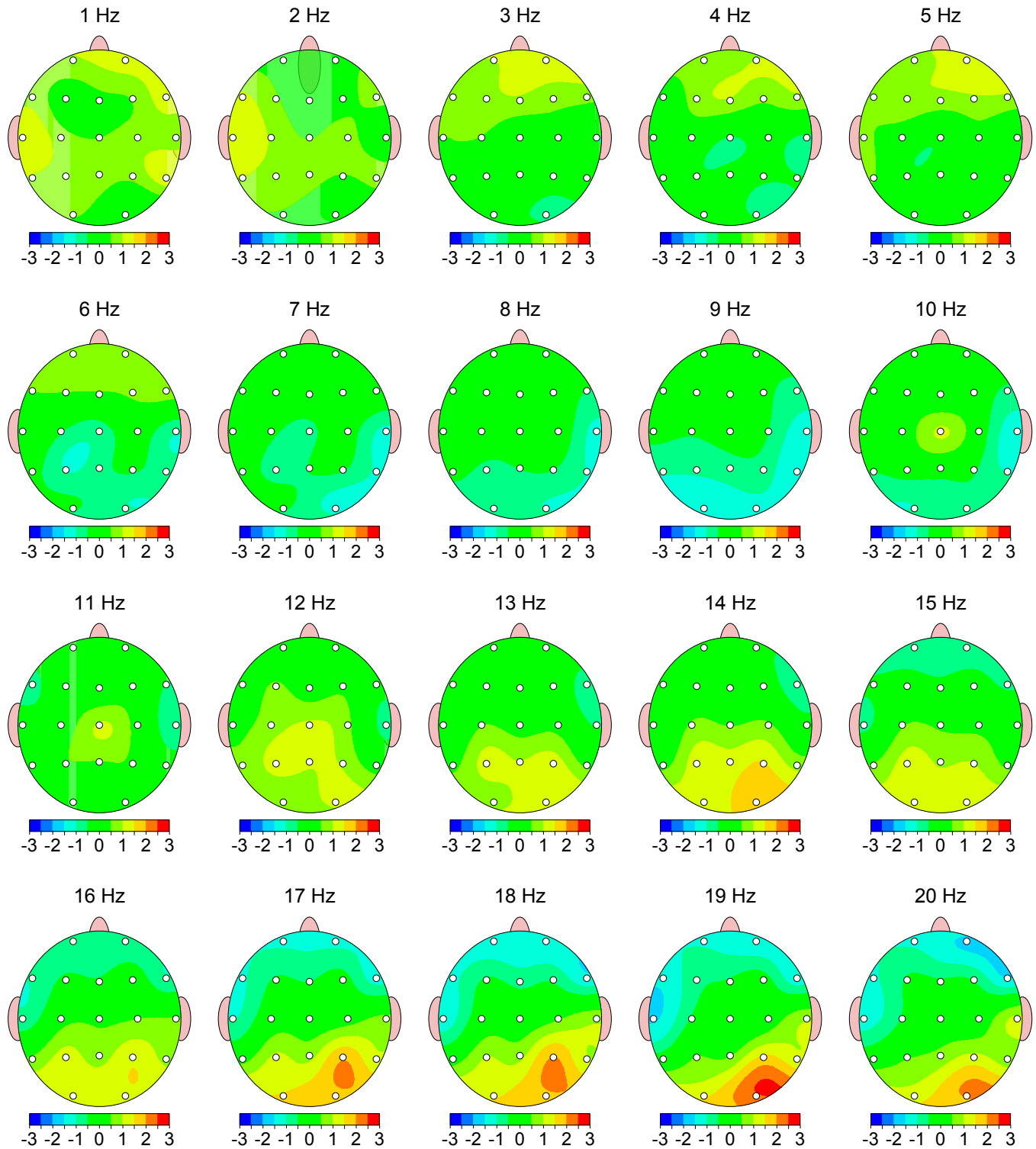


Z Scored FFT Absolute Power



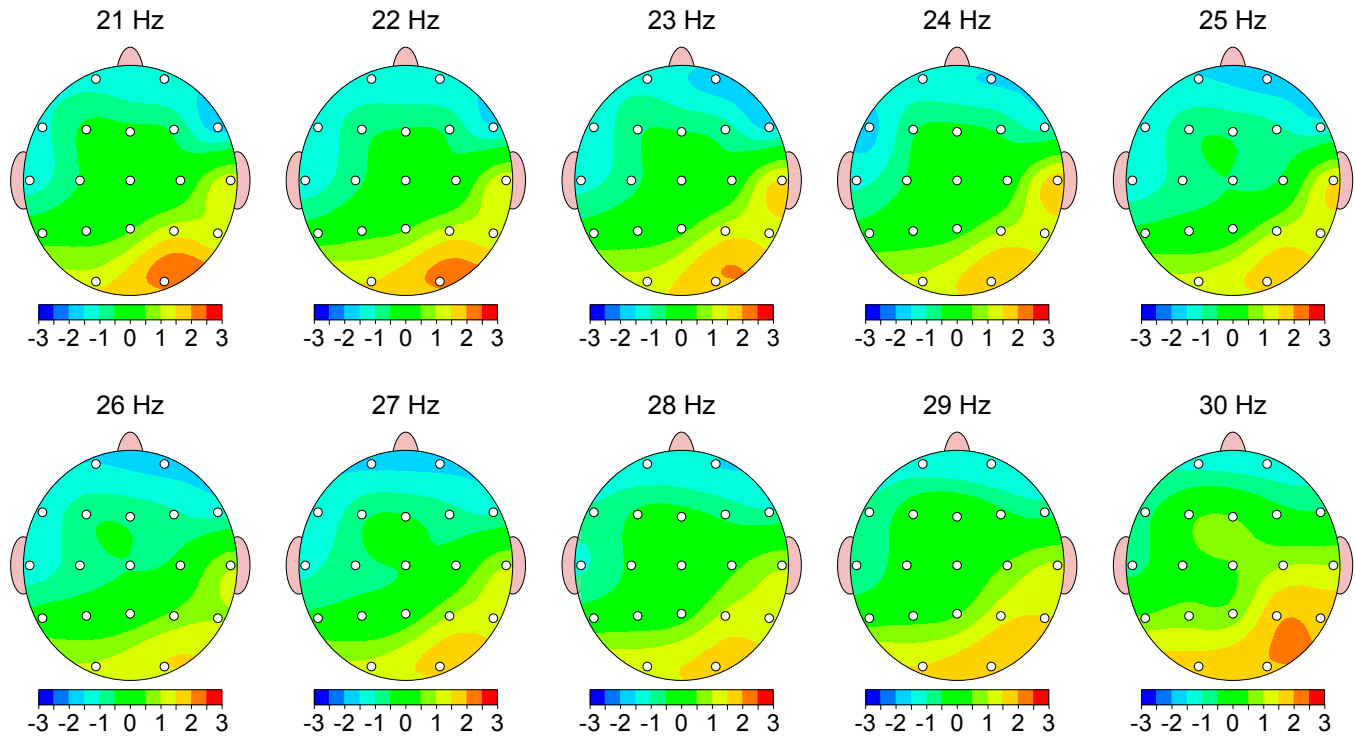
Z Scored FFT Relative Power

Warning: Absolute power must be consulted to interpret relative power.

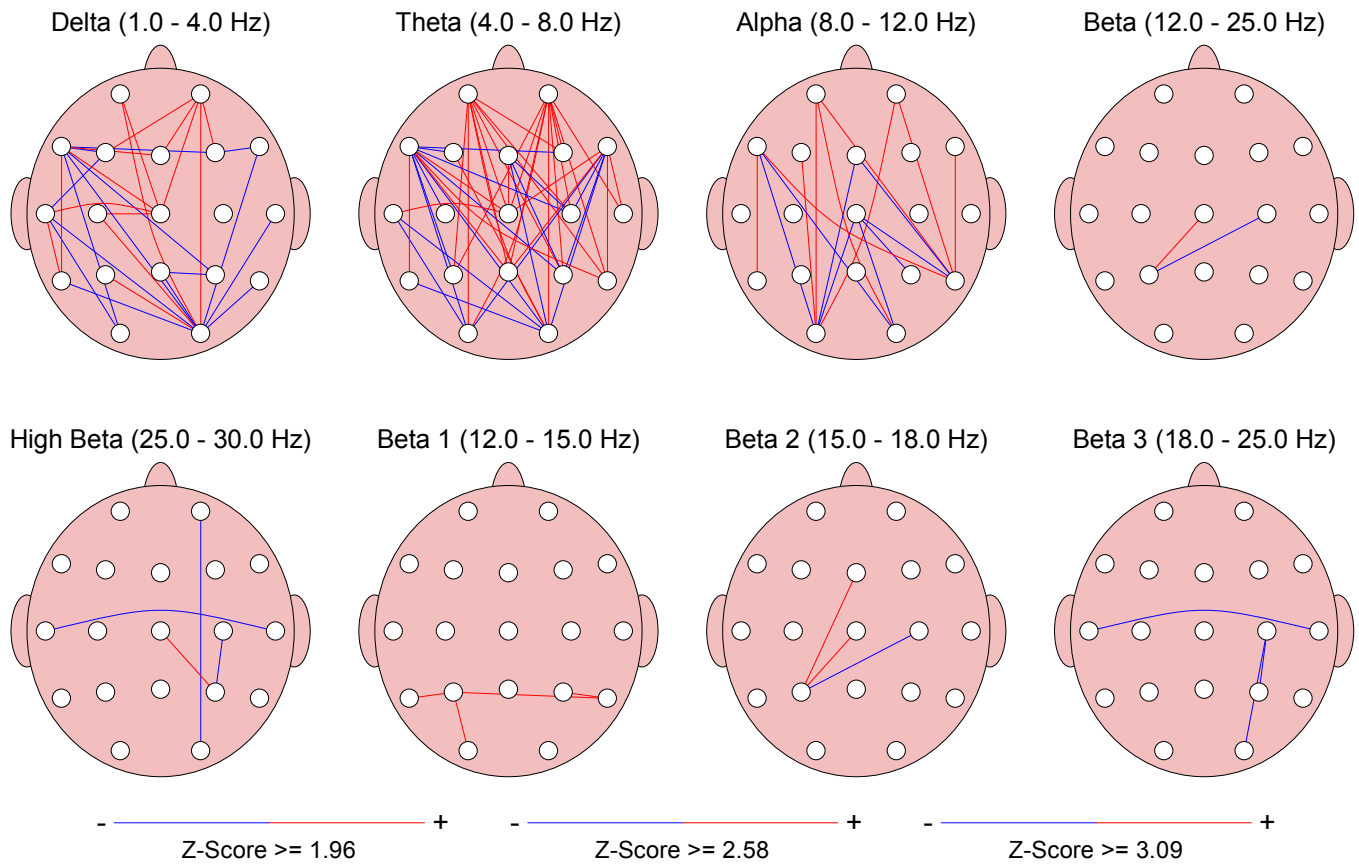


Z Scored FFT Relative Power

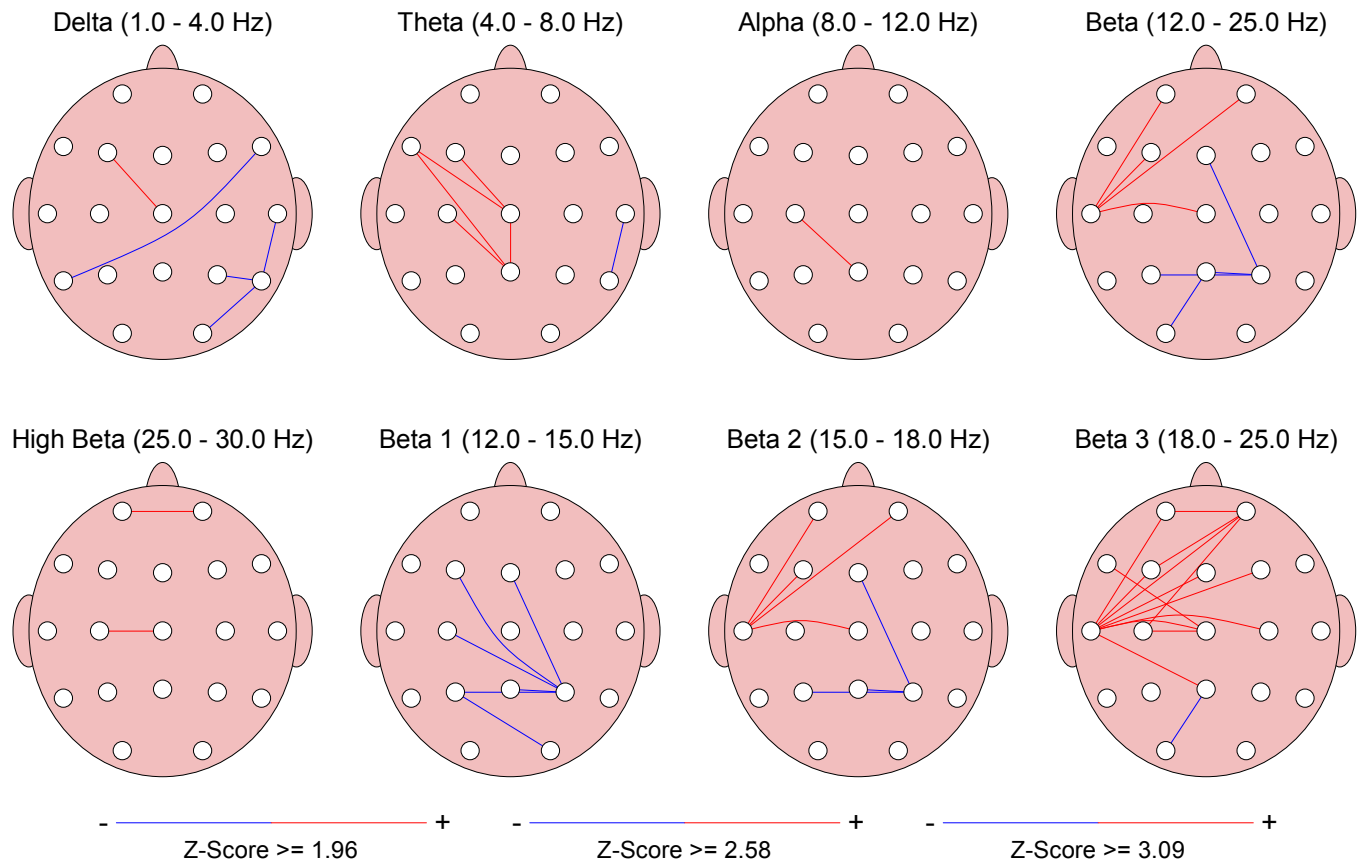
Warning: Absolute power must be consulted to interpret relative power.



Z Scored FFT Amplitude Asymmetry

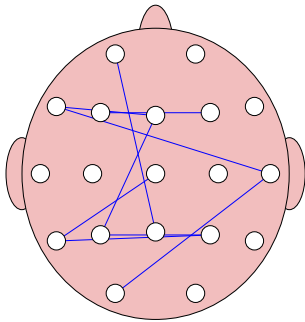


Z Scored FFT Coherence

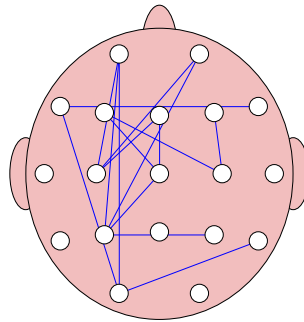


Z Scored FFT Phase Lag

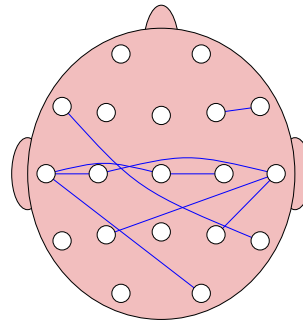
Delta (1.0 - 4.0 Hz)



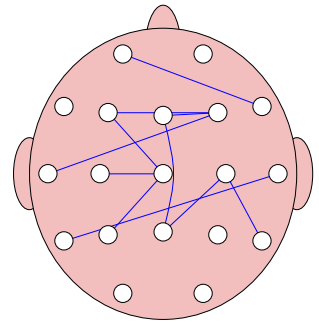
Theta (4.0 - 8.0 Hz)



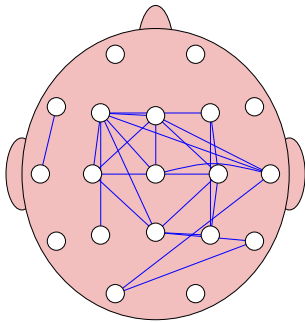
Alpha (8.0 - 12.0 Hz)



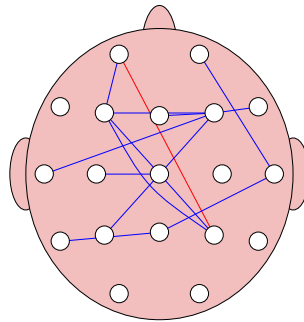
Beta (12.0 - 25.0 Hz)



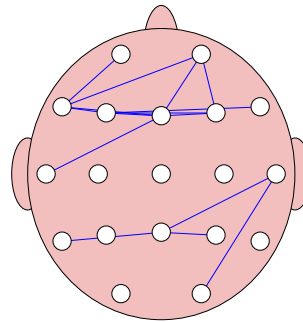
High Beta (25.0 - 30.0 Hz)



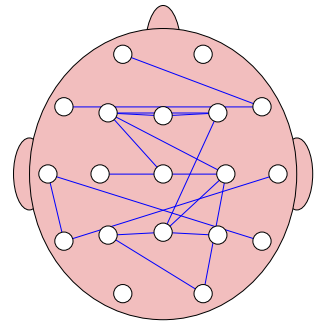
Beta 1 (12.0 - 15.0 Hz)



Beta 2 (15.0 - 18.0 Hz)



Beta 3 (18.0 - 25.0 Hz)



- ———— +
Z-Score >= 1.96

- ———— +
Z-Score >= 2.58

- ———— +
Z-Score >= 3.09

FFT Absolute Power (uV Sq)

Intrahemispheric: LEFT

| | DELTA | THETA | ALPHA | BETA | HIGH | BETA 1 | BETA 2 | BETA 3 |
|----------|-------|-------|-------|------|------|--------|--------|--------|
| FP1 - LE | 16.78 | 7.50 | 3.20 | 3.10 | 0.30 | 1.20 | 0.78 | 1.12 |
| F3 - LE | 13.63 | 8.49 | 3.79 | 3.66 | 0.31 | 1.47 | 0.93 | 1.25 |
| C3 - LE | 15.11 | 7.13 | 5.08 | 4.34 | 0.27 | 1.87 | 1.16 | 1.31 |
| P3 - LE | 17.16 | 6.08 | 5.85 | 6.81 | 0.36 | 3.24 | 1.83 | 1.75 |
| O1 - LE | 6.70 | 2.78 | 2.78 | 6.01 | 1.22 | 1.64 | 1.22 | 3.15 |
| F7 - LE | 14.11 | 6.14 | 2.80 | 3.10 | 0.31 | 1.18 | 0.78 | 1.14 |
| T3 - LE | 10.03 | 3.78 | 1.89 | 2.37 | 0.22 | 0.97 | 0.64 | 0.77 |
| T5 - LE | 8.41 | 3.60 | 2.60 | 3.49 | 0.34 | 1.39 | 0.90 | 1.19 |

Intrahemispheric: RIGHT

| | DELTA | THETA | ALPHA | BETA | HIGH | BETA 1 | BETA 2 | BETA 3 |
|----------|-------|-------|-------|------|------|--------|--------|--------|
| FP2 - LE | 19.53 | 7.93 | 3.17 | 3.15 | 0.33 | 1.20 | 0.83 | 1.12 |
| F4 - LE | 13.14 | 7.78 | 3.47 | 3.47 | 0.31 | 1.29 | 0.94 | 1.24 |
| C4 - LE | 12.59 | 5.99 | 4.41 | 3.81 | 0.29 | 1.56 | 0.98 | 1.26 |
| P4 - LE | 12.91 | 5.48 | 4.72 | 6.04 | 0.46 | 2.51 | 1.63 | 1.90 |
| O2 - LE | 5.90 | 2.47 | 3.47 | 8.78 | 1.95 | 2.25 | 1.57 | 4.97 |
| F8 - LE | 12.84 | 5.81 | 2.26 | 2.52 | 0.30 | 0.89 | 0.67 | 0.96 |
| T4 - LE | 8.11 | 3.03 | 1.61 | 9.59 | 2.48 | 1.17 | 1.42 | 7.00 |
| T6 - LE | 8.61 | 2.64 | 2.05 | 3.85 | 0.69 | 1.31 | 0.89 | 1.65 |

Intrahemispheric: CENTER

| | DELTA | THETA | ALPHA | BETA | HIGH | BETA 1 | BETA 2 | BETA 3 |
|---------|-------|-------|-------|------|------|--------|--------|--------|
| Fz - LE | 17.23 | 11.15 | 4.42 | 4.01 | 0.35 | 1.55 | 1.04 | 1.41 |
| Cz - LE | 16.30 | 8.07 | 7.52 | 4.41 | 0.30 | 1.88 | 1.13 | 1.39 |
| Pz - LE | 19.98 | 6.96 | 6.71 | 6.30 | 0.36 | 3.01 | 1.61 | 1.67 |

Z Scored FFT Absolute Power

Intrahemispheric: LEFT

| | DELTA | THETA | ALPHA | BETA | HIGH | BETA 1 | BETA 2 | BETA 3 |
|----------|-------|-------|-------|-------|-------|--------|--------|--------|
| FP1 - LE | 0.05 | -0.03 | -0.65 | -1.14 | -1.06 | -0.71 | -1.07 | -1.24 |
| F3 - LE | -1.24 | -0.78 | -0.86 | -1.21 | -1.24 | -0.74 | -1.09 | -1.51 |
| C3 - LE | -0.71 | -1.05 | -0.75 | -0.85 | -1.41 | -0.43 | -0.67 | -1.51 |
| P3 - LE | -0.69 | -1.23 | -0.85 | -0.20 | -1.23 | 0.04 | -0.13 | -0.79 |
| O1 - LE | -1.59 | -1.64 | -1.52 | -0.69 | -0.02 | -0.91 | -0.79 | -0.26 |
| F7 - LE | 0.46 | 0.08 | -0.39 | -0.67 | -0.95 | -0.27 | -0.63 | -0.98 |
| T3 - LE | 0.06 | -0.64 | -0.93 | -1.40 | -1.00 | -0.83 | -1.11 | -1.42 |
| T5 - LE | -0.98 | -1.09 | -1.11 | -1.03 | -0.97 | -0.70 | -0.84 | -1.27 |

Intrahemispheric: RIGHT

| | DELTA | THETA | ALPHA | BETA | HIGH | BETA 1 | BETA 2 | BETA 3 |
|----------|-------|-------|-------|-------|-------|--------|--------|--------|
| FP2 - LE | 0.10 | -0.06 | -0.75 | -1.63 | -1.39 | -0.87 | -1.28 | -1.78 |
| F4 - LE | -1.37 | -1.04 | -1.02 | -1.40 | -1.59 | -0.99 | -1.15 | -1.60 |
| C4 - LE | -1.50 | -1.70 | -0.99 | -1.11 | -1.73 | -0.80 | -0.96 | -1.46 |
| P4 - LE | -1.58 | -1.70 | -1.11 | -0.45 | -0.85 | -0.35 | -0.35 | -0.64 |
| O2 - LE | -2.12 | -1.95 | -1.31 | -0.21 | 0.51 | -0.60 | -0.57 | 0.36 |
| F8 - LE | -0.05 | -0.26 | -0.89 | -1.42 | -1.21 | -0.96 | -1.10 | -1.59 |
| T4 - LE | -0.83 | -1.41 | -1.40 | 0.10 | 0.56 | -1.09 | -0.56 | 0.65 |
| T6 - LE | -1.22 | -1.91 | -1.60 | -0.97 | -0.31 | -0.94 | -0.94 | -0.75 |

Intrahemispheric: CENTER

| | DELTA | THETA | ALPHA | BETA | HIGH | BETA 1 | BETA 2 | BETA 3 |
|---------|-------|-------|-------|-------|-------|--------|--------|--------|
| Fz - LE | -0.98 | -0.60 | -0.83 | -1.11 | -1.65 | -0.78 | -1.00 | -1.36 |
| Cz - LE | -1.59 | -1.65 | -0.56 | -1.06 | -1.67 | -0.68 | -0.91 | -1.54 |
| Pz - LE | -0.80 | -1.36 | -0.90 | -0.53 | -1.21 | -0.27 | -0.50 | -1.01 |

FFT Relative Power (%)

Intrahemispheric: LEFT

| | DELTA | THETA | ALPHA | BETA | HIGH | BETA 1 | BETA 2 | BETA 3 |
|----------|-------|-------|-------|-------|------|--------|--------|--------|
| FP1 - LE | 53.90 | 24.11 | 10.29 | 9.97 | 0.95 | 3.85 | 2.51 | 3.61 |
| F3 - LE | 45.30 | 28.21 | 12.59 | 12.16 | 1.02 | 4.89 | 3.11 | 4.16 |
| C3 - LE | 46.99 | 22.17 | 15.78 | 13.50 | 0.85 | 5.83 | 3.61 | 4.06 |
| P3 - LE | 46.93 | 16.63 | 16.00 | 18.63 | 0.98 | 8.85 | 4.99 | 4.79 |
| O1 - LE | 32.25 | 13.40 | 13.38 | 28.91 | 5.87 | 7.90 | 5.86 | 15.15 |
| F7 - LE | 52.90 | 23.01 | 10.50 | 11.62 | 1.15 | 4.42 | 2.92 | 4.29 |
| T3 - LE | 54.25 | 20.45 | 10.23 | 12.83 | 1.20 | 5.22 | 3.44 | 4.17 |
| T5 - LE | 44.84 | 19.17 | 13.87 | 18.60 | 1.79 | 7.43 | 4.82 | 6.35 |

Intrahemispheric: RIGHT

| | DELTA | THETA | ALPHA | BETA | HIGH | BETA 1 | BETA 2 | BETA 3 |
|----------|-------|-------|-------|-------|------|--------|--------|--------|
| FP2 - LE | 56.80 | 23.05 | 9.22 | 9.16 | 0.95 | 3.49 | 2.41 | 3.27 |
| F4 - LE | 46.27 | 27.39 | 12.22 | 12.20 | 1.08 | 4.53 | 3.29 | 4.38 |
| C4 - LE | 46.04 | 21.92 | 16.12 | 13.92 | 1.06 | 5.71 | 3.59 | 4.62 |
| P4 - LE | 43.00 | 18.27 | 15.73 | 20.11 | 1.54 | 8.36 | 5.42 | 6.33 |
| O2 - LE | 23.93 | 10.04 | 14.10 | 35.63 | 7.93 | 9.12 | 6.35 | 20.16 |
| F8 - LE | 53.59 | 24.25 | 9.44 | 10.52 | 1.26 | 3.72 | 2.81 | 3.99 |
| T4 - LE | 31.34 | 11.70 | 6.23 | 37.03 | 9.56 | 4.50 | 5.49 | 27.04 |
| T6 - LE | 46.68 | 14.29 | 11.09 | 20.85 | 3.72 | 7.08 | 4.85 | 8.92 |

Intrahemispheric: CENTER

| | DELTA | THETA | ALPHA | BETA | HIGH | BETA 1 | BETA 2 | BETA 3 |
|---------|-------|-------|-------|-------|------|--------|--------|--------|
| Fz - LE | 46.05 | 29.80 | 11.82 | 10.71 | 0.94 | 4.15 | 2.79 | 3.78 |
| Cz - LE | 44.23 | 21.90 | 20.41 | 11.95 | 0.81 | 5.10 | 3.08 | 3.78 |
| Pz - LE | 49.17 | 17.13 | 16.52 | 15.49 | 0.88 | 7.42 | 3.96 | 4.11 |

Z Scored FFT Relative Power

Intrahemispheric: LEFT

| | DELTA | THETA | ALPHA | BETA | HIGH | BETA 1 | BETA 2 | BETA 3 |
|----------|-------|-------|-------|-------|-------|--------|--------|--------|
| FP1 - LE | 0.83 | 0.74 | -0.33 | -1.08 | -1.48 | -0.27 | -0.96 | -1.31 |
| F3 - LE | 0.43 | 0.65 | -0.23 | -0.34 | -0.57 | 0.27 | -0.34 | -0.62 |
| C3 - LE | 0.80 | -0.23 | -0.28 | 0.10 | -0.65 | 0.64 | 0.25 | -0.58 |
| P3 - LE | 0.69 | -0.79 | -0.56 | 1.12 | -0.05 | 1.25 | 1.21 | 0.43 |
| O1 - LE | 0.38 | -0.15 | -1.22 | 1.32 | 1.24 | 0.92 | 1.38 | 1.37 |
| F7 - LE | 1.00 | 0.39 | -0.51 | -1.07 | -1.23 | -0.19 | -0.85 | -1.39 |
| T3 - LE | 1.25 | 0.36 | -0.36 | -1.23 | -1.16 | -0.11 | -0.91 | -1.31 |
| T5 - LE | 0.84 | 0.10 | -0.68 | 0.22 | -0.13 | 0.49 | 0.50 | -0.02 |

Intrahemispheric: RIGHT

| | DELTA | THETA | ALPHA | BETA | HIGH | BETA 1 | BETA 2 | BETA 3 |
|----------|-------|-------|-------|-------|-------|--------|--------|--------|
| FP2 - LE | 1.00 | 0.80 | -0.40 | -1.27 | -1.60 | -0.39 | -0.96 | -1.56 |
| F4 - LE | 0.50 | 0.62 | -0.29 | -0.40 | -0.81 | 0.05 | -0.20 | -0.64 |
| C4 - LE | 0.66 | -0.23 | -0.25 | 0.32 | -0.13 | 0.51 | 0.36 | 0.02 |
| P4 - LE | 0.46 | -0.39 | -0.59 | 1.58 | 0.97 | 1.28 | 1.37 | 1.59 |
| O2 - LE | -0.21 | -0.83 | -0.94 | 2.05 | 1.65 | 1.39 | 1.56 | 2.14 |
| F8 - LE | 1.00 | 0.83 | -0.69 | -1.34 | -1.11 | -0.63 | -0.94 | -1.57 |
| T4 - LE | 0.20 | -0.84 | -1.36 | 1.11 | 1.10 | -0.59 | 0.47 | 1.36 |
| T6 - LE | 0.92 | -0.75 | -1.36 | 0.90 | 1.21 | 0.46 | 0.79 | 1.17 |

Intrahemispheric: CENTER

| | DELTA | THETA | ALPHA | BETA | HIGH | BETA 1 | BETA 2 | BETA 3 |
|---------|-------|-------|-------|-------|-------|--------|--------|--------|
| Fz - LE | 0.44 | 0.63 | -0.35 | -0.45 | -0.45 | -0.07 | -0.43 | -0.55 |
| Cz - LE | 0.38 | -0.87 | 0.46 | 0.34 | -0.42 | 0.68 | 0.31 | -0.07 |
| Pz - LE | 0.70 | -0.59 | -0.44 | 1.00 | 0.13 | 1.12 | 0.89 | 0.53 |

FFT Power Ratio

Intrahemispheric: LEFT

| | D/T | D/A | D/B | D/G | T/A | T/B | T/G | A/B | A/G | B/G |
|----------|------|------|------|-------|------|------|-------|------|-------|-------|
| FP1 - LE | 2.24 | 5.24 | 5.41 | 56.59 | 2.34 | 2.42 | 25.31 | 1.03 | 10.80 | 10.47 |
| F3 - LE | 1.61 | 3.60 | 3.73 | 44.58 | 2.24 | 2.32 | 27.77 | 1.04 | 12.39 | 11.96 |
| C3 - LE | 2.12 | 2.98 | 3.48 | 55.33 | 1.40 | 1.64 | 26.11 | 1.17 | 18.58 | 15.89 |
| P3 - LE | 2.82 | 2.93 | 2.52 | 47.99 | 1.04 | 0.89 | 17.01 | 0.86 | 16.36 | 19.05 |
| O1 - LE | 2.41 | 2.41 | 1.12 | 5.50 | 1.00 | 0.46 | 2.29 | 0.46 | 2.28 | 4.93 |
| F7 - LE | 2.30 | 5.04 | 4.55 | 45.87 | 2.19 | 1.98 | 19.95 | 0.90 | 9.10 | 10.08 |
| T3 - LE | 2.65 | 5.30 | 4.23 | 45.25 | 2.00 | 1.59 | 17.06 | 0.80 | 8.53 | 10.70 |
| T5 - LE | 2.34 | 3.23 | 2.41 | 25.11 | 1.38 | 1.03 | 10.74 | 0.75 | 7.77 | 10.42 |

Intrahemispheric: RIGHT

| | D/T | D/A | D/B | D/G | T/A | T/B | T/G | A/B | A/G | B/G |
|----------|------|------|------|-------|------|------|-------|------|-------|-------|
| FP2 - LE | 2.46 | 6.16 | 6.20 | 60.04 | 2.50 | 2.52 | 24.37 | 1.01 | 9.75 | 9.69 |
| F4 - LE | 1.69 | 3.79 | 3.79 | 42.70 | 2.24 | 2.25 | 25.28 | 1.00 | 11.28 | 11.26 |
| C4 - LE | 2.10 | 2.86 | 3.31 | 43.52 | 1.36 | 1.57 | 20.72 | 1.16 | 15.24 | 13.16 |
| P4 - LE | 2.35 | 2.73 | 2.14 | 27.89 | 1.16 | 0.91 | 11.85 | 0.78 | 10.20 | 13.04 |
| O2 - LE | 2.38 | 1.70 | 0.67 | 3.02 | 0.71 | 0.28 | 1.27 | 0.40 | 1.78 | 4.49 |
| F8 - LE | 2.21 | 5.68 | 5.09 | 42.63 | 2.57 | 2.31 | 19.29 | 0.90 | 7.51 | 8.37 |
| T4 - LE | 2.68 | 5.03 | 0.85 | 3.28 | 1.88 | 0.32 | 1.22 | 0.17 | 0.65 | 3.87 |
| T6 - LE | 3.27 | 4.21 | 2.24 | 12.56 | 1.29 | 0.69 | 3.84 | 0.53 | 2.98 | 5.61 |

Intrahemispheric: CENTER

| | D/T | D/A | D/B | D/G | T/A | T/B | T/G | A/B | A/G | B/G |
|---------|------|------|------|-------|------|------|-------|------|-------|-------|
| Fz - LE | 1.55 | 3.90 | 4.30 | 49.18 | 2.52 | 2.78 | 31.83 | 1.10 | 12.62 | 11.44 |
| Cz - LE | 2.02 | 2.17 | 3.70 | 54.32 | 1.07 | 1.83 | 26.90 | 1.71 | 25.07 | 14.68 |
| Pz - LE | 2.87 | 2.98 | 3.17 | 56.09 | 1.04 | 1.11 | 19.54 | 1.07 | 18.85 | 17.67 |

Z Scored FFT Power Ratio

Intrahemispheric: LEFT

| | D/T | D/A | D/B | D/G | T/A | T/B | T/G | A/B | A/G | B/G |
|----------|-------|------|-------|-------|------|-------|-------|-------|-------|-------|
| FP1 - LE | 0.08 | 0.60 | 1.03 | 1.41 | 0.82 | 1.22 | 1.53 | 0.45 | 0.90 | 1.20 |
| F3 - LE | -0.10 | 0.31 | 0.44 | 0.73 | 0.49 | 0.56 | 0.74 | 0.01 | 0.24 | 0.38 |
| C3 - LE | 0.85 | 0.48 | 0.40 | 1.09 | 0.15 | -0.18 | 0.50 | -0.34 | 0.24 | 0.73 |
| P3 - LE | 1.08 | 0.63 | -0.31 | 0.57 | 0.13 | -1.08 | -0.30 | -1.14 | -0.30 | 0.85 |
| O1 - LE | 0.53 | 0.93 | -0.72 | -1.05 | 0.84 | -0.98 | -1.15 | -1.49 | -1.35 | -0.91 |
| F7 - LE | 0.46 | 0.71 | 1.17 | 1.41 | 0.63 | 0.95 | 1.25 | 0.15 | 0.58 | 0.78 |
| T3 - LE | 1.27 | 1.19 | 1.34 | 1.33 | 0.70 | 0.82 | 0.96 | 0.36 | 0.61 | 0.87 |
| T5 - LE | 0.65 | 0.78 | 0.32 | 0.47 | 0.62 | -0.10 | 0.14 | -0.66 | -0.21 | 0.32 |

Intrahemispheric: RIGHT

| | D/T | D/A | D/B | D/G | T/A | T/B | T/G | A/B | A/G | B/G |
|----------|------|------|-------|-------|------|-------|-------|-------|-------|-------|
| FP2 - LE | 0.17 | 0.68 | 1.23 | 1.56 | 0.89 | 1.53 | 1.70 | 0.62 | 1.04 | 1.21 |
| F4 - LE | 0.02 | 0.39 | 0.51 | 0.92 | 0.52 | 0.58 | 0.97 | 0.00 | 0.35 | 0.55 |
| C4 - LE | 0.75 | 0.42 | 0.21 | 0.51 | 0.13 | -0.33 | 0.03 | -0.44 | -0.08 | 0.28 |
| P4 - LE | 0.73 | 0.56 | -0.60 | -0.62 | 0.31 | -1.21 | -1.17 | -1.32 | -0.88 | 0.11 |
| O2 - LE | 0.55 | 0.45 | -1.50 | -1.80 | 0.30 | -1.84 | -1.86 | -1.69 | -1.50 | -0.96 |
| F8 - LE | 0.32 | 0.87 | 1.31 | 1.30 | 1.01 | 1.30 | 1.22 | 0.20 | 0.39 | 0.47 |
| T4 - LE | 1.30 | 1.20 | -0.60 | -0.86 | 0.86 | -1.07 | -1.13 | -1.44 | -1.29 | -0.75 |
| T6 - LE | 1.66 | 1.25 | 0.04 | -0.67 | 0.65 | -0.98 | -1.43 | -1.54 | -1.47 | -0.87 |

Intrahemispheric: CENTER

| | D/T | D/A | D/B | D/G | T/A | T/B | T/G | A/B | A/G | B/G |
|---------|-------|-------|-------|------|-------|-------|-------|-------|-------|------|
| Fz - LE | -0.06 | 0.40 | 0.52 | 0.69 | 0.59 | 0.64 | 0.64 | -0.05 | 0.05 | 0.12 |
| Cz - LE | 0.75 | -0.15 | 0.01 | 0.64 | -0.76 | -0.65 | 0.01 | 0.24 | 0.55 | 0.66 |
| Pz - LE | 0.98 | 0.56 | -0.09 | 0.54 | 0.15 | -0.96 | -0.40 | -0.93 | -0.35 | 0.58 |

Peak Frequency (Hz)

Intrahemispheric: LEFT

| | DELTA | THETA | ALPHA | BETA | HIGH | BETA 1 | BETA 2 | BETA 3 |
|----------|-------|-------|-------|-------|-------|--------|--------|--------|
| FP1 - LE | 2.00 | 5.57 | 9.42 | 16.71 | 26.88 | 13.16 | 16.19 | 20.86 |
| F3 - LE | 2.20 | 5.50 | 9.43 | 16.52 | 26.85 | 13.10 | 16.17 | 20.80 |
| C3 - LE | 2.09 | 5.50 | 9.70 | 16.19 | 26.88 | 13.08 | 16.13 | 20.70 |
| P3 - LE | 1.97 | 5.51 | 9.91 | 15.82 | 26.85 | 13.09 | 16.10 | 20.56 |
| O1 - LE | 1.98 | 5.53 | 9.85 | 17.98 | 27.02 | 13.13 | 16.25 | 21.17 |
| F7 - LE | 2.05 | 5.58 | 9.42 | 16.74 | 26.86 | 13.14 | 16.15 | 20.84 |
| T3 - LE | 1.99 | 5.47 | 9.59 | 16.44 | 26.92 | 13.11 | 16.15 | 20.86 |
| T5 - LE | 2.01 | 5.46 | 9.78 | 16.51 | 26.92 | 13.07 | 16.12 | 20.82 |

Intrahemispheric: RIGHT

| | DELTA | THETA | ALPHA | BETA | HIGH | BETA 1 | BETA 2 | BETA 3 |
|----------|-------|-------|-------|-------|-------|--------|--------|--------|
| FP2 - LE | 1.95 | 5.53 | 9.48 | 16.69 | 26.90 | 13.18 | 16.18 | 20.82 |
| F4 - LE | 2.12 | 5.53 | 9.51 | 16.68 | 26.92 | 13.09 | 16.16 | 20.77 |
| C4 - LE | 2.06 | 5.56 | 9.74 | 16.39 | 26.95 | 13.05 | 16.18 | 20.67 |
| P4 - LE | 1.99 | 5.55 | 9.87 | 16.33 | 26.94 | 13.19 | 16.21 | 20.56 |
| O2 - LE | 2.01 | 5.52 | 10.08 | 18.32 | 26.98 | 13.12 | 16.29 | 21.31 |
| F8 - LE | 1.99 | 5.52 | 9.50 | 16.87 | 26.86 | 13.13 | 16.12 | 20.89 |
| T4 - LE | 1.95 | 5.40 | 9.74 | 19.93 | 26.59 | 13.26 | 16.31 | 21.78 |
| T6 - LE | 1.93 | 5.48 | 9.85 | 17.30 | 26.96 | 13.22 | 16.23 | 21.12 |

Intrahemispheric: CENTER

| | DELTA | THETA | ALPHA | BETA | HIGH | BETA 1 | BETA 2 | BETA 3 |
|---------|-------|-------|-------|-------|-------|--------|--------|--------|
| Fz - LE | 2.18 | 5.47 | 9.45 | 16.62 | 26.88 | 13.11 | 16.17 | 20.81 |
| Cz - LE | 2.10 | 5.49 | 9.89 | 16.26 | 26.87 | 13.02 | 16.14 | 20.73 |
| Pz - LE | 1.97 | 5.54 | 9.91 | 15.84 | 26.88 | 13.05 | 16.12 | 20.59 |

Z Scored Peak Frequency

Intrahemispheric: LEFT

| | DELTA | THETA | ALPHA | BETA | HIGH | BETA 1 | BETA 2 | BETA 3 |
|----------|-------|-------|-------|-------|------|--------|--------|--------|
| FP1 - LE | -0.38 | -0.25 | -0.34 | -1.06 | 0.22 | -0.46 | -0.36 | -0.90 |
| F3 - LE | 0.93 | -0.46 | -0.22 | -0.75 | 1.02 | -0.83 | -0.27 | -0.32 |
| C3 - LE | -0.43 | -0.40 | 0.13 | -1.17 | 0.96 | -0.20 | -0.70 | -0.55 |
| P3 - LE | -1.33 | -0.36 | 0.73 | -0.91 | 0.62 | -0.05 | -0.58 | -0.55 |
| O1 - LE | -1.05 | -0.55 | 0.33 | 0.99 | 1.97 | 0.65 | 0.58 | 0.86 |
| F7 - LE | -0.18 | 0.12 | -0.44 | -1.12 | 0.39 | -0.55 | -0.65 | -0.94 |
| T3 - LE | -1.65 | -0.20 | -0.23 | -1.03 | 0.92 | -0.79 | -0.86 | -0.55 |
| T5 - LE | -0.89 | -0.61 | 0.36 | -0.43 | 0.82 | -0.30 | -0.52 | -0.18 |

Intrahemispheric: RIGHT

| | DELTA | THETA | ALPHA | BETA | HIGH | BETA 1 | BETA 2 | BETA 3 |
|----------|-------|-------|-------|-------|-------|--------|--------|--------|
| FP2 - LE | -0.62 | -0.45 | -0.14 | -1.21 | 0.38 | -0.25 | -0.40 | -1.09 |
| F4 - LE | -0.05 | -0.33 | 0.05 | -0.63 | 0.88 | -0.87 | -0.17 | -0.45 |
| C4 - LE | -1.09 | -0.05 | 0.29 | -0.64 | 1.47 | -0.28 | -0.31 | -0.37 |
| P4 - LE | -1.32 | -0.16 | 0.60 | -0.11 | 0.90 | 0.51 | 0.55 | -0.37 |
| O2 - LE | -0.84 | -0.55 | 0.94 | 1.50 | 1.11 | 0.40 | 1.03 | 1.23 |
| F8 - LE | -1.00 | -0.35 | -0.13 | -0.95 | 0.78 | -0.65 | -1.08 | -0.56 |
| T4 - LE | -2.04 | -0.66 | 0.28 | 1.63 | -0.99 | 0.50 | 0.63 | 1.98 |
| T6 - LE | -1.77 | -0.47 | 0.48 | 0.73 | 1.34 | 0.59 | 0.64 | 0.99 |

Intrahemispheric: CENTER

| | DELTA | THETA | ALPHA | BETA | HIGH | BETA 1 | BETA 2 | BETA 3 |
|---------|-------|-------|-------|-------|------|--------|--------|--------|
| Fz - LE | 0.43 | -0.59 | -0.12 | -0.36 | 1.39 | -0.64 | -0.05 | 0.03 |
| Cz - LE | -0.70 | -0.25 | 1.23 | -0.80 | 0.97 | -0.92 | -0.51 | -0.18 |
| Pz - LE | -1.33 | -0.24 | 0.69 | -0.67 | 0.68 | -0.14 | -0.37 | -0.25 |

FFT Amplitude Asymmetry

Intrahemispheric: LEFT

| | DELTA | THETA | ALPHA | BETA |
|--------|--------|--------|--------|--------|
| FP1 F3 | 20.67 | -12.36 | -16.84 | -16.42 |
| FP1 C3 | 10.44 | 5.08 | -45.30 | -33.24 |
| FP1 P3 | -2.28 | 20.92 | -58.56 | -74.83 |
| FP1 O1 | 85.85 | 91.73 | 14.06 | -63.74 |
| FP1 F7 | 17.29 | 20.02 | 13.40 | 0.14 |
| FP1 T3 | 50.33 | 65.96 | 51.43 | 26.72 |
| FP1 T5 | 66.42 | 70.37 | 20.65 | -11.72 |
| F3 C3 | -10.28 | 17.41 | -29.02 | -17.06 |
| F3 P3 | -22.92 | 33.07 | -42.78 | -60.27 |
| F3 O1 | 68.21 | 101.22 | 30.72 | -48.59 |
| F3 F7 | -3.41 | 32.18 | 30.07 | 16.56 |
| F3 T3 | 30.46 | 76.76 | 66.83 | 42.67 |
| F3 T5 | 47.37 | 80.97 | 37.17 | 4.72 |
| C3 P3 | -12.71 | 15.88 | -14.20 | -44.35 |
| C3 O1 | 77.13 | 87.67 | 58.43 | -32.20 |
| C3 F7 | 6.88 | 14.98 | 57.83 | 33.38 |
| C3 T3 | 40.42 | 61.39 | 91.41 | 58.66 |
| C3 T5 | 56.96 | 65.88 | 64.44 | 21.73 |
| P3 O1 | 87.70 | 74.38 | 71.16 | 12.60 |
| P3 F7 | 19.55 | -0.91 | 70.58 | 74.96 |
| P3 T3 | 52.46 | 46.65 | 102.29 | 96.72 |
| P3 T5 | 68.44 | 51.34 | 76.89 | 64.53 |
| O1 F7 | -71.20 | -75.16 | -0.67 | 63.87 |
| O1 T3 | -39.81 | -30.36 | 38.06 | 86.77 |
| O1 T5 | -22.66 | -25.47 | 6.63 | 53.01 |
| F7 T3 | 33.78 | 47.51 | 38.70 | 26.58 |
| F7 T5 | 50.58 | 52.19 | 7.30 | -11.86 |
| T3 T5 | 17.55 | 4.99 | -31.62 | -38.15 |

Intrahemispheric: RIGHT

| | DELTA | THETA | ALPHA | BETA |
|--------|--------|--------|--------|---------|
| FP2 F4 | 39.09 | 1.85 | -9.03 | -9.52 |
| FP2 C4 | 43.26 | 27.80 | -32.59 | -18.83 |
| FP2 P4 | 40.81 | 36.43 | -39.35 | -62.83 |
| FP2 O2 | 107.21 | 104.86 | -9.14 | -94.39 |
| FP2 F8 | 41.31 | 30.79 | 33.42 | 22.21 |
| FP2 T4 | 82.62 | 89.39 | 65.13 | -101.05 |
| FP2 T6 | 77.58 | 100.15 | 43.15 | -19.88 |
| F4 C4 | 4.35 | 25.99 | -23.73 | -9.35 |
| F4 P4 | 1.79 | 34.64 | -30.58 | -54.12 |
| F4 O2 | 76.09 | 103.51 | -0.11 | -86.83 |
| F4 F8 | 2.32 | 28.98 | 42.14 | 31.56 |
| F4 T4 | 47.35 | 87.91 | 73.09 | -93.78 |
| F4 T6 | 41.65 | 98.75 | 51.68 | -10.41 |
| C4 P4 | -2.56 | 8.85 | -6.98 | -45.34 |
| C4 O2 | 72.34 | 83.11 | 23.62 | -79.08 |
| C4 F8 | -2.03 | 3.06 | 64.26 | 40.61 |
| C4 T4 | 43.22 | 65.67 | 92.79 | -86.33 |
| C4 T6 | 37.47 | 77.76 | 73.16 | -1.06 |
| P4 O2 | 74.55 | 75.65 | 30.48 | -37.06 |
| P4 F8 | 0.52 | -5.80 | 70.45 | 82.17 |
| P4 T4 | 45.65 | 57.66 | 98.18 | -45.43 |
| P4 T6 | 39.93 | 70.11 | 79.13 | 44.33 |
| O2 F8 | -74.10 | -80.57 | 42.24 | 110.80 |
| O2 T4 | -31.59 | -20.20 | 73.18 | -8.74 |
| O2 T6 | -37.41 | -6.39 | 51.78 | 78.19 |
| F8 T4 | 45.16 | 62.93 | 33.53 | -116.71 |
| F8 T6 | 39.42 | 75.15 | 10.09 | -41.63 |
| T4 T6 | -6.00 | 13.85 | -23.64 | 85.46 |

Interhemispheric: HOMOLOGOUS PAIRS

| | DELTA | THETA | ALPHA | BETA |
|---------|--------|-------|--------|---------|
| FP1 FP2 | -15.18 | -5.51 | 0.93 | -1.53 |
| C3 C4 | 18.24 | 17.34 | 14.13 | 13.12 |
| O1 O2 | 12.70 | 11.80 | -22.21 | -37.56 |
| T3 T4 | 21.14 | 22.06 | 15.87 | -120.67 |

| | DELTA | THETA | ALPHA | BETA |
|-------|-------|-------|-------|-------|
| F3 F4 | 3.65 | 8.71 | 8.77 | 5.40 |
| P3 P4 | 28.27 | 10.32 | 21.31 | 12.08 |
| F7 F8 | 9.37 | 5.43 | 21.17 | 20.56 |
| T5 T6 | -2.38 | 30.78 | 23.93 | -9.73 |

Z Scored FFT Amplitude Asymmetry

Intrahemispheric: LEFT

| | DELTA | THETA | ALPHA | BETA |
|--------|-------|-------|-------|-------|
| FP1 F3 | 1.54 | 1.80 | 0.92 | -0.06 |
| FP1 C3 | 0.77 | 1.87 | 0.45 | -0.42 |
| FP1 P3 | 0.67 | 2.23 | 0.75 | -0.98 |
| FP1 O1 | 1.79 | 2.35 | 2.51 | -0.41 |
| FP1 F7 | -0.62 | -0.28 | -0.65 | -0.85 |
| FP1 T3 | 0.08 | 0.98 | 0.84 | 0.48 |
| FP1 T5 | 1.14 | 1.66 | 1.43 | -0.13 |
| F3 C3 | -0.92 | 0.98 | -0.05 | -0.82 |
| F3 P3 | -0.60 | 1.30 | 0.29 | -1.50 |
| F3 O1 | 1.22 | 1.61 | 2.13 | -0.46 |
| F3 F7 | -3.41 | -2.36 | -1.71 | -1.33 |
| F3 T3 | -2.00 | -0.06 | 0.26 | 0.55 |
| F3 T5 | 0.04 | 0.89 | 0.96 | -0.14 |
| C3 P3 | 0.05 | 0.80 | 0.36 | -1.86 |
| C3 O1 | 1.82 | 1.39 | 1.84 | -0.13 |
| C3 F7 | -1.84 | -2.90 | -0.87 | -0.40 |
| C3 T3 | -1.41 | -0.81 | 0.26 | 0.88 |
| C3 T5 | 0.99 | 0.45 | 0.82 | 0.46 |
| P3 O1 | 1.87 | 1.31 | 1.69 | 0.81 |
| P3 F7 | -1.39 | -3.03 | -1.19 | 0.59 |
| P3 T3 | -1.06 | -1.40 | -0.01 | 1.25 |
| P3 T5 | 0.88 | -0.14 | 0.68 | 1.92 |
| O1 F7 | -2.78 | -3.02 | -3.03 | -0.08 |
| O1 T3 | -2.55 | -2.03 | -1.80 | 0.89 |
| O1 T5 | -1.84 | -1.93 | -1.76 | 0.53 |
| F7 T3 | 0.84 | 1.80 | 1.95 | 1.23 |
| F7 T5 | 2.26 | 2.61 | 2.13 | 0.67 |
| T3 T5 | 2.23 | 1.38 | 0.78 | -0.72 |

Intrahemispheric: RIGHT

| | DELTA | THETA | ALPHA | BETA |
|--------|-------|-------|-------|-------|
| FP2 F4 | 2.71 | 2.21 | 1.33 | -0.09 |
| FP2 C4 | 1.44 | 2.59 | 0.87 | -0.29 |
| FP2 P4 | 1.43 | 3.08 | 1.25 | -1.13 |
| FP2 O2 | 2.35 | 3.04 | 1.91 | -1.18 |
| FP2 F8 | 0.29 | 0.51 | 0.78 | -0.09 |
| FP2 T4 | 1.08 | 2.43 | 1.76 | -1.48 |
| FP2 T6 | 1.30 | 2.86 | 2.61 | -0.41 |
| F4 C4 | 0.32 | 1.50 | 0.35 | -0.32 |
| F4 P4 | 0.33 | 1.59 | 0.69 | -1.45 |
| F4 O2 | 1.64 | 1.91 | 1.34 | -1.23 |
| F4 F8 | -2.08 | -1.57 | -0.41 | 0.01 |
| F4 T4 | -0.69 | 0.76 | 0.91 | -1.39 |
| F4 T6 | 0.26 | 1.61 | 1.68 | -0.45 |
| C4 P4 | 0.10 | 0.10 | 0.36 | -1.84 |
| C4 O2 | 1.62 | 1.25 | 1.03 | -1.33 |
| C4 F8 | -1.65 | -2.82 | -0.49 | 0.23 |
| C4 T4 | -1.28 | -0.60 | 0.60 | -1.30 |
| C4 T6 | 0.02 | 0.85 | 1.28 | -0.29 |
| P4 O2 | 1.93 | 1.67 | 0.92 | -0.39 |
| P4 F8 | -1.50 | -2.81 | -0.75 | 0.99 |
| P4 T4 | -1.02 | -0.62 | 0.35 | -0.61 |
| P4 T6 | -0.07 | 1.07 | 1.62 | 1.41 |
| O2 F8 | -2.74 | -3.19 | -1.43 | 1.09 |
| O2 T4 | -2.48 | -1.87 | -0.31 | -0.34 |
| O2 T6 | -2.62 | -1.10 | 0.01 | 1.26 |
| F8 T4 | 1.45 | 3.88 | 1.61 | -1.51 |
| F8 T6 | 1.32 | 3.10 | 2.03 | -0.39 |
| T4 T6 | 0.83 | 1.64 | 0.67 | 1.17 |

Interhemispheric: HOMOLOGOUS PAIRS

| | DELTA | THETA | ALPHA | BETA |
|---------|-------|-------|-------|-------|
| FP1 FP2 | -0.12 | 0.07 | 0.28 | 0.44 |
| C3 C4 | 1.21 | 1.07 | 0.69 | 1.00 |
| O1 O2 | 1.01 | 1.08 | -0.38 | -0.78 |
| T3 T4 | 0.91 | 0.73 | 0.78 | -1.83 |

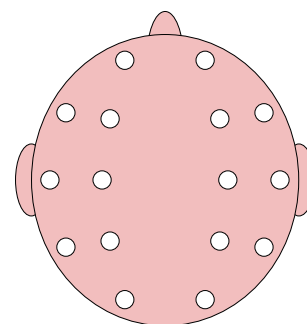
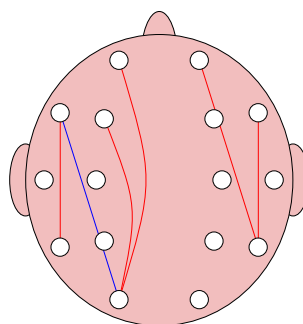
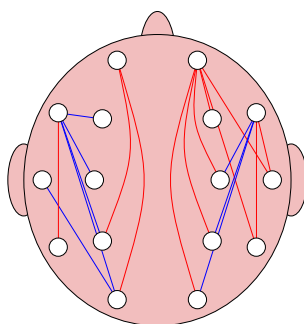
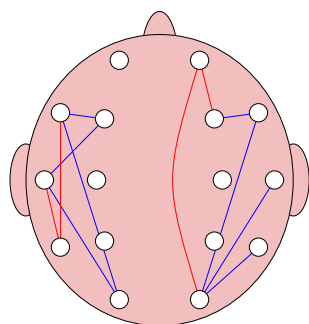
| | DELTA | THETA | ALPHA | BETA |
|-------|-------|-------|-------|-------|
| F3 F4 | 0.35 | 0.60 | 0.66 | 0.55 |
| P3 P4 | 1.56 | 0.88 | 0.90 | 0.93 |
| F7 F8 | 0.68 | 0.49 | 1.02 | 1.17 |
| T5 T6 | 0.39 | 1.28 | 1.34 | -0.09 |

Delta (1.0 - 4.0 Hz)

Theta (4.0 - 8.0 Hz)

Alpha (8.0 - 12.0 Hz)

Beta (12.0 - 25.0 Hz)



- ———— +
Z-Score >= 1.96

- ———— +
Z-Score >= 2.58

- ———— +
Z-Score >= 3.09

FFT Coherence

Intrahemispheric: LEFT

| | DELTA | THETA | ALPHA | BETA |
|--------|-------|-------|-------|-------|
| FP1 F3 | 48.04 | 61.06 | 60.19 | 62.22 |
| FP1 C3 | 15.13 | 27.33 | 18.95 | 24.76 |
| FP1 P3 | 2.54 | 6.58 | 5.87 | 4.04 |
| FP1 O1 | 0.03 | 0.08 | 1.09 | 0.40 |
| FP1 F7 | 39.44 | 51.38 | 54.73 | 50.97 |
| FP1 T3 | 10.88 | 11.84 | 13.37 | 16.01 |
| FP1 T5 | 1.22 | 1.84 | 2.48 | 1.59 |
| F3 C3 | 72.91 | 73.98 | 64.95 | 65.53 |
| F3 P3 | 37.37 | 33.97 | 30.30 | 19.67 |
| F3 O1 | 17.50 | 8.93 | 8.83 | 2.06 |
| F3 F7 | 53.33 | 66.29 | 69.19 | 66.70 |
| F3 T3 | 36.22 | 35.50 | 42.25 | 38.65 |
| F3 T5 | 29.69 | 19.23 | 19.79 | 10.27 |
| C3 P3 | 76.67 | 73.54 | 73.73 | 64.91 |
| C3 O1 | 50.24 | 33.01 | 27.53 | 12.98 |
| C3 F7 | 30.31 | 43.18 | 35.37 | 39.73 |
| C3 T3 | 40.86 | 46.96 | 56.04 | 54.89 |
| C3 T5 | 63.01 | 49.24 | 51.67 | 38.63 |
| P3 O1 | 77.54 | 67.64 | 51.70 | 33.04 |
| P3 F7 | 14.00 | 17.75 | 16.26 | 13.74 |
| P3 T3 | 30.75 | 37.16 | 48.25 | 40.89 |
| P3 T5 | 78.46 | 74.92 | 77.43 | 66.07 |
| O1 F7 | 4.61 | 2.35 | 4.02 | 1.61 |
| O1 T3 | 18.03 | 15.33 | 19.65 | 10.69 |
| O1 T5 | 78.78 | 69.44 | 60.94 | 49.64 |
| F7 T3 | 31.78 | 38.71 | 42.19 | 40.88 |
| F7 T5 | 13.17 | 12.01 | 12.36 | 8.19 |
| T3 T5 | 36.54 | 46.62 | 54.37 | 40.13 |

Intrahemispheric: RIGHT

| | DELTA | THETA | ALPHA | BETA |
|--------|-------|-------|-------|-------|
| FP2 F4 | 44.80 | 60.36 | 57.41 | 56.35 |
| FP2 C4 | 14.97 | 23.76 | 20.67 | 20.65 |
| FP2 P4 | 2.05 | 4.45 | 6.10 | 2.27 |
| FP2 O2 | 0.25 | 0.09 | 1.11 | 0.46 |
| FP2 F8 | 48.97 | 59.46 | 56.83 | 55.30 |
| FP2 T4 | 14.13 | 14.06 | 12.34 | 2.58 |
| FP2 T6 | 0.60 | 0.39 | 1.32 | 0.15 |
| F4 C4 | 74.44 | 70.29 | 66.52 | 61.68 |
| F4 P4 | 31.74 | 25.57 | 24.90 | 11.04 |
| F4 O2 | 7.88 | 4.50 | 5.44 | 2.34 |
| F4 F8 | 51.21 | 59.19 | 61.95 | 63.49 |
| F4 T4 | 32.02 | 29.83 | 31.90 | 3.41 |
| F4 T6 | 9.89 | 6.96 | 8.72 | 2.06 |
| C4 P4 | 70.25 | 66.22 | 66.34 | 53.61 |
| C4 O2 | 27.29 | 22.22 | 17.96 | 12.09 |
| C4 F8 | 24.37 | 28.21 | 30.41 | 34.70 |
| C4 T4 | 34.63 | 37.08 | 43.02 | 8.62 |
| C4 T6 | 26.89 | 28.00 | 30.92 | 18.29 |
| P4 O2 | 47.13 | 49.74 | 38.98 | 33.24 |
| P4 F8 | 6.10 | 5.72 | 10.82 | 7.55 |
| P4 T4 | 22.82 | 24.46 | 36.99 | 10.99 |
| P4 T6 | 41.68 | 57.59 | 62.83 | 52.49 |
| O2 F8 | 0.41 | 0.03 | 2.69 | 1.50 |
| O2 T4 | 4.42 | 4.23 | 13.32 | 3.41 |
| O2 T6 | 34.47 | 53.22 | 58.41 | 64.39 |
| F8 T4 | 29.38 | 35.24 | 30.69 | 3.84 |
| F8 T6 | 2.66 | 0.88 | 4.42 | 1.93 |
| T4 T6 | 12.76 | 17.60 | 33.33 | 11.49 |

Interhemispheric: HOMOLOGOUS PAIRS

| | DELTA | THETA | ALPHA | BETA |
|---------|-------|-------|-------|-------|
| FP1 FP2 | 74.56 | 75.54 | 76.39 | 74.06 |
| C3 C4 | 72.39 | 58.25 | 58.56 | 35.68 |
| O1 O2 | 56.44 | 58.79 | 25.19 | 17.55 |
| T3 T4 | 1.35 | 0.43 | 0.16 | 0.11 |

| | DELTA | THETA | ALPHA | BETA |
|-------|-------|-------|-------|-------|
| F3 F4 | 73.02 | 65.94 | 65.22 | 54.27 |
| P3 P4 | 60.86 | 44.97 | 31.42 | 12.01 |
| F7 F8 | 10.78 | 12.74 | 13.62 | 12.03 |
| T5 T6 | 17.64 | 12.10 | 5.36 | 1.73 |

Z Scored FFT Coherence

Intrahemispheric: LEFT

| | DELTA | THETA | ALPHA | BETA |
|--------|-------|-------|-------|-------|
| FP1 F3 | -0.67 | 0.20 | -0.18 | 1.21 |
| FP1 C3 | -0.67 | 0.43 | -0.40 | 0.86 |
| FP1 P3 | -0.75 | -0.14 | -0.12 | 0.14 |
| FP1 O1 | -1.65 | -1.36 | -0.65 | -0.23 |
| FP1 F7 | -1.60 | -0.33 | -0.45 | 0.77 |
| FP1 T3 | -0.12 | 0.23 | -0.01 | 2.31 |
| FP1 T5 | -0.39 | 0.19 | -0.13 | 0.65 |
| F3 C3 | 1.21 | 1.34 | 0.42 | 1.04 |
| F3 P3 | 1.06 | 0.87 | 1.05 | 0.70 |
| F3 O1 | 1.85 | 0.65 | 0.65 | 0.06 |
| F3 F7 | -0.07 | 0.91 | 0.42 | 1.19 |
| F3 T3 | 0.31 | 0.51 | 0.94 | 2.09 |
| F3 T5 | 1.89 | 1.08 | 1.89 | 1.80 |
| C3 P3 | 0.96 | 1.02 | 1.95 | 1.59 |
| C3 O1 | 1.54 | 1.00 | 1.37 | 0.42 |
| C3 F7 | 0.33 | 1.12 | -0.17 | 1.08 |
| C3 T3 | -0.38 | 0.07 | 0.46 | 1.50 |
| C3 T5 | 1.42 | 1.10 | 1.86 | 1.84 |
| P3 O1 | 0.96 | 0.62 | 0.09 | -1.25 |
| P3 F7 | 1.14 | 1.46 | 0.63 | 1.36 |
| P3 T3 | -0.08 | 0.40 | 0.99 | 1.65 |
| P3 T5 | 0.85 | 1.11 | 1.18 | 1.20 |
| O1 F7 | 1.09 | 0.53 | 0.08 | 0.48 |
| O1 T3 | 0.75 | 0.85 | 1.22 | 1.17 |
| O1 T5 | 1.18 | 1.36 | 0.49 | 0.30 |
| F7 T3 | -0.73 | -0.12 | 0.08 | 1.33 |
| F7 T5 | 1.40 | 1.06 | 1.11 | 1.50 |
| T3 T5 | -0.10 | 0.51 | 1.36 | 1.65 |

Intrahemispheric: RIGHT

| | DELTA | THETA | ALPHA | BETA |
|--------|-------|-------|-------|-------|
| FP2 F4 | -1.09 | 0.05 | -0.50 | 1.03 |
| FP2 C4 | -0.79 | -0.00 | -0.32 | 0.60 |
| FP2 P4 | -1.63 | -1.00 | -0.45 | -0.52 |
| FP2 O2 | -1.11 | -1.38 | -0.76 | -0.27 |
| FP2 F8 | -0.88 | -0.09 | -0.51 | 0.90 |
| FP2 T4 | -0.24 | -0.35 | -0.39 | -0.61 |
| FP2 T6 | -1.24 | -1.10 | -0.99 | -0.96 |
| F4 C4 | 1.19 | 1.13 | 0.64 | 0.97 |
| F4 P4 | 0.40 | -0.52 | 0.35 | -0.60 |
| F4 O2 | 0.20 | -0.54 | -0.13 | -0.06 |
| F4 F8 | -0.61 | 0.11 | -0.12 | 1.18 |
| F4 T4 | -0.40 | -0.30 | 0.11 | -1.18 |
| F4 T6 | -0.30 | -0.74 | 0.00 | -0.61 |
| C4 P4 | -0.15 | -0.33 | 0.50 | -0.21 |
| C4 O2 | -0.01 | -0.27 | 0.23 | -0.14 |
| C4 F8 | -0.75 | -0.73 | -0.74 | 0.74 |
| C4 T4 | -1.76 | -1.07 | -0.53 | -1.58 |
| C4 T6 | -1.50 | -0.85 | 0.24 | -0.44 |
| P4 O2 | -1.00 | -0.67 | -0.52 | -0.82 |
| P4 F8 | -0.74 | -1.43 | -0.29 | -0.05 |
| P4 T4 | -1.41 | -1.18 | 0.07 | -0.81 |
| P4 T6 | -2.19 | -0.35 | 0.30 | 0.12 |
| O2 F8 | -0.98 | -1.15 | -0.35 | -0.06 |
| O2 T4 | -1.13 | -1.17 | 0.33 | -0.52 |
| O2 T6 | -2.40 | -0.59 | 0.19 | 1.10 |
| F8 T4 | -1.08 | -0.88 | -0.93 | -1.62 |
| F8 T6 | -0.74 | -1.39 | -0.65 | -0.57 |
| T4 T6 | -2.62 | -2.03 | -0.22 | -0.98 |

Interhemispheric: HOMOLOGOUS PAIRS

| | DELTA | THETA | ALPHA | BETA |
|---------|-------|-------|-------|-------|
| FP1 FP2 | 0.40 | 1.00 | 0.64 | 1.90 |
| C3 C4 | 1.14 | 0.88 | 1.21 | 0.76 |
| O1 O2 | -0.36 | -0.01 | -0.99 | -1.53 |
| T3 T4 | -1.11 | -0.77 | -1.44 | -1.17 |

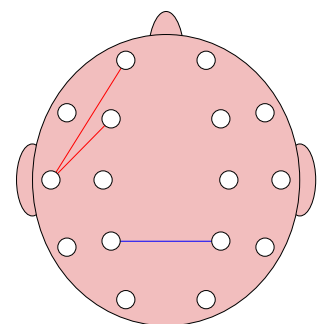
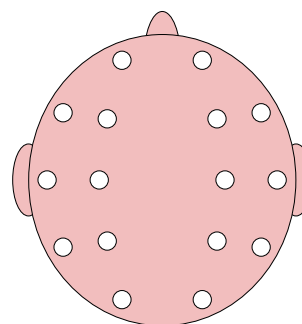
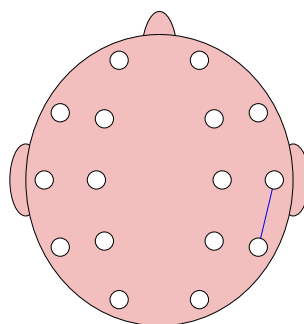
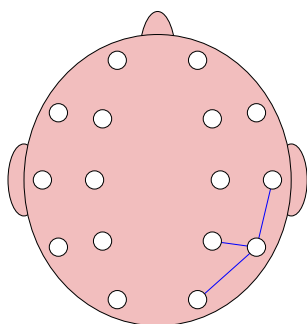
| | DELTA | THETA | ALPHA | BETA |
|-------|-------|-------|-------|-------|
| F3 F4 | 1.14 | 0.78 | 0.43 | 1.19 |
| P3 P4 | -0.20 | -0.91 | -0.49 | -2.86 |
| F7 F8 | -0.48 | 0.45 | -0.01 | 1.01 |
| T5 T6 | -0.54 | 0.21 | -0.01 | -0.56 |

Delta (1.0 - 4.0 Hz)

Theta (4.0 - 8.0 Hz)

Alpha (8.0 - 12.0 Hz)

Beta (12.0 - 25.0 Hz)



- ———— +
Z-Score >= 1.96

- ———— +
Z-Score >= 2.58

- ———— +
Z-Score >= 3.09

FFT Phase Lag (Deg)

Intrahemispheric: LEFT

| | DELTA | THETA | ALPHA | BETA |
|--------|---------|--------|--------|--------|
| FP1 F3 | 1.32 | 2.83 | -3.83 | 0.62 |
| FP1 C3 | 3.33 | 2.34 | -15.76 | -6.03 |
| FP1 P3 | 6.03 | 1.91 | -27.18 | -19.39 |
| FP1 O1 | -127.63 | 2.06 | -47.29 | -72.25 |
| FP1 F7 | 3.90 | 0.41 | 0.34 | -1.49 |
| FP1 T3 | 6.82 | -6.59 | -8.52 | -7.55 |
| FP1 T5 | 11.37 | -16.02 | -34.34 | -45.00 |
| F3 C3 | 1.04 | 1.25 | -4.70 | -2.33 |
| F3 P3 | 2.10 | 2.45 | -6.68 | -5.43 |
| F3 O1 | 6.18 | 7.17 | -11.38 | -20.72 |
| F3 F7 | -1.09 | -3.18 | 2.05 | -1.51 |
| F3 T3 | -4.26 | -8.99 | -4.65 | -4.28 |
| F3 T5 | 3.40 | -6.60 | -10.35 | -14.36 |
| C3 P3 | 0.96 | 0.64 | -2.28 | -3.11 |
| C3 O1 | 4.48 | 2.33 | -8.27 | -10.58 |
| C3 F7 | -4.97 | -3.33 | 9.59 | 7.23 |
| C3 T3 | -7.83 | -8.94 | -0.50 | 0.71 |
| C3 T5 | 1.69 | -5.40 | -6.36 | -6.18 |
| P3 O1 | 2.87 | 1.23 | -4.73 | -4.13 |
| P3 F7 | -8.72 | -2.48 | 15.13 | 18.70 |
| P3 T3 | -11.41 | -9.22 | 2.77 | 6.58 |
| P3 T5 | -0.69 | -4.06 | -1.71 | 0.87 |
| O1 F7 | -17.93 | -3.89 | 22.47 | 47.88 |
| O1 T3 | -16.20 | -12.58 | 6.12 | 9.67 |
| O1 T5 | -3.76 | -4.30 | 1.66 | 1.56 |
| F7 T3 | 1.85 | -5.17 | -6.10 | -4.87 |
| F7 T5 | 6.72 | -7.11 | -15.74 | -22.77 |
| T3 T5 | 8.50 | 4.62 | -2.99 | -2.52 |

Intrahemispheric: RIGHT

| | DELTA | THETA | ALPHA | BETA |
|--------|--------|---------|--------|--------|
| FP2 F4 | 0.22 | 3.92 | -4.08 | 1.79 |
| FP2 C4 | -1.28 | 0.85 | -19.79 | -8.74 |
| FP2 P4 | -3.39 | 1.00 | -33.37 | -32.83 |
| FP2 O2 | 173.21 | 107.31 | -31.94 | -8.01 |
| FP2 F8 | -2.80 | -0.05 | -1.82 | 0.82 |
| FP2 T4 | -7.97 | -5.52 | -17.43 | -12.90 |
| FP2 T6 | -45.75 | 19.89 | -29.20 | -16.48 |
| F4 C4 | 0.56 | -0.06 | -5.98 | -2.67 |
| F4 P4 | 1.52 | 2.06 | -6.79 | -6.06 |
| F4 O2 | 18.92 | 23.00 | 4.38 | 14.64 |
| F4 F8 | -4.30 | -4.58 | 0.46 | -1.50 |
| F4 T4 | -8.16 | -8.59 | -8.83 | -16.77 |
| F4 T6 | 2.14 | 10.92 | 8.07 | 9.53 |
| C4 P4 | 1.71 | 0.96 | -1.21 | -4.01 |
| C4 O2 | 14.04 | 9.67 | 4.75 | 3.43 |
| C4 F8 | -5.70 | -1.06 | 12.22 | 6.75 |
| C4 T4 | -6.59 | -8.20 | -2.29 | -6.62 |
| C4 T6 | 3.46 | 4.03 | 8.03 | 0.72 |
| P4 O2 | 8.39 | 4.53 | 1.98 | 1.58 |
| P4 F8 | -9.87 | 1.48 | 21.99 | 20.73 |
| P4 T4 | -6.83 | -10.24 | -0.01 | 3.82 |
| P4 T6 | 1.31 | 1.44 | 4.85 | 1.18 |
| O2 F8 | -71.80 | -132.12 | 19.41 | 7.26 |
| O2 T4 | -18.61 | -24.71 | -5.11 | 6.44 |
| O2 T6 | -4.56 | -2.91 | 0.54 | -2.33 |
| F8 T4 | -6.30 | -3.64 | -8.54 | -19.40 |
| F8 T6 | -2.92 | -6.87 | -9.54 | -10.17 |
| T4 T6 | 3.98 | 7.25 | 6.58 | -7.62 |

Interhemispheric: HOMOLOGOUS PAIRS

| | DELTA | THETA | ALPHA | BETA |
|---------|-------|--------|--------|--------|
| FP1 FP2 | -1.14 | -1.14 | -3.13 | -1.34 |
| C3 C4 | 0.18 | -1.27 | -1.15 | -4.05 |
| O1 O2 | 6.11 | 0.97 | 1.83 | 0.68 |
| T3 T4 | 8.21 | 172.39 | -73.03 | -47.22 |

| | DELTA | THETA | ALPHA | BETA |
|-------|--------|-------|-------|-------|
| F3 F4 | -0.18 | 0.29 | -0.66 | 0.46 |
| P3 P4 | 0.04 | 0.02 | -1.32 | -2.65 |
| F7 F8 | -13.08 | 0.71 | -4.01 | 1.14 |
| T5 T6 | 6.51 | 14.13 | 14.15 | 15.66 |

Z Scored FFT Phase Lag

Intrahemispheric: LEFT

| | DELTA | THETA | ALPHA | BETA |
|--------|-------|-------|-------|-------|
| FP1 F3 | -0.97 | -0.41 | 0.07 | -1.95 |
| FP1 C3 | -0.63 | -1.98 | 0.84 | 0.26 |
| FP1 P3 | -0.88 | -2.03 | 0.26 | 0.43 |
| FP1 O1 | 0.65 | -2.01 | -0.86 | 0.50 |
| FP1 F7 | -0.25 | -1.89 | -1.59 | -1.51 |
| FP1 T3 | -0.63 | -0.83 | -0.24 | 0.02 |
| FP1 T5 | -1.50 | -0.78 | -0.49 | 0.08 |
| F3 C3 | -1.23 | -1.80 | 0.02 | -0.84 |
| F3 P3 | -0.92 | -1.38 | -0.25 | 0.18 |
| F3 O1 | -0.54 | -0.64 | -0.75 | 0.31 |
| F3 F7 | -0.90 | 0.28 | -0.31 | -1.17 |
| F3 T3 | -0.14 | 0.35 | -0.28 | -0.34 |
| F3 T5 | -0.58 | -0.01 | -0.58 | 0.20 |
| C3 P3 | -0.76 | -1.14 | -1.06 | 0.12 |
| C3 O1 | -0.04 | -0.98 | -0.46 | 0.59 |
| C3 F7 | 0.04 | -0.63 | 0.69 | 1.00 |
| C3 T3 | 0.01 | 0.11 | -2.52 | -1.51 |
| C3 T5 | -0.77 | 0.36 | -0.26 | 0.12 |
| P3 O1 | -0.06 | -0.93 | 0.16 | 0.44 |
| P3 F7 | -0.41 | -1.47 | 0.22 | 0.87 |
| P3 T3 | 0.04 | -0.00 | -0.76 | 0.42 |
| P3 T5 | -1.19 | 0.57 | -0.68 | -1.04 |
| O1 F7 | -1.46 | -2.58 | -0.84 | 0.22 |
| O1 T3 | -0.05 | -0.38 | -0.78 | 0.06 |
| O1 T5 | 0.43 | 0.46 | -1.22 | -0.36 |
| F7 T3 | -0.61 | 0.63 | 0.24 | 0.10 |
| F7 T5 | -0.85 | -0.39 | -0.41 | 0.39 |
| T3 T5 | 0.04 | -0.50 | -0.45 | -0.75 |

Intrahemispheric: RIGHT

| | DELTA | THETA | ALPHA | BETA |
|--------|-------|-------|-------|-------|
| FP2 F4 | -1.86 | 0.79 | 0.63 | -0.82 |
| FP2 C4 | -1.39 | -1.45 | 0.92 | 0.53 |
| FP2 P4 | -1.24 | -1.65 | 0.51 | 1.16 |
| FP2 O2 | 0.99 | 0.97 | -0.60 | -1.38 |
| FP2 F8 | 0.39 | -1.66 | -0.95 | -1.88 |
| FP2 T4 | 0.13 | 0.01 | 0.37 | 0.45 |
| FP2 T6 | 0.40 | 0.14 | -0.21 | -0.31 |
| F4 C4 | -1.36 | -1.99 | 0.26 | -0.15 |
| F4 P4 | -0.73 | -0.65 | -0.38 | -0.01 |
| F4 O2 | 0.36 | 0.62 | -1.29 | -0.01 |
| F4 F8 | 0.73 | 1.02 | -2.24 | -1.01 |
| F4 T4 | 0.74 | 0.80 | 0.21 | 1.00 |
| F4 T6 | -1.06 | 0.53 | -0.82 | -0.28 |
| C4 P4 | -0.14 | -0.90 | -1.23 | 0.39 |
| C4 O2 | 1.18 | 0.51 | -1.00 | -0.73 |
| C4 F8 | -0.03 | -1.25 | 1.03 | 0.41 |
| C4 T4 | 0.27 | 0.96 | -0.40 | 0.37 |
| C4 T6 | 0.04 | 0.16 | -0.20 | -2.55 |
| P4 O2 | 1.15 | 0.28 | -0.72 | -0.70 |
| P4 F8 | 0.15 | -1.23 | 0.54 | 1.37 |
| P4 T4 | -0.11 | 0.86 | -2.06 | -0.01 |
| P4 T6 | -0.60 | -0.43 | 0.07 | -0.89 |
| O2 F8 | 0.40 | 1.37 | -0.75 | -1.35 |
| O2 T4 | 0.22 | 0.84 | -0.97 | -0.39 |
| O2 T6 | 0.52 | -0.26 | -1.47 | -0.71 |
| F8 T4 | 0.67 | 0.12 | 0.50 | 1.49 |
| F8 T6 | -0.90 | 0.10 | -0.70 | -0.08 |
| T4 T6 | -0.68 | 0.88 | -0.03 | 0.87 |

Interhemispheric: HOMOLOGOUS PAIRS

| | DELTA | THETA | ALPHA | BETA |
|---------|-------|-------|-------|-------|
| FP1 FP2 | -0.83 | -0.91 | 0.22 | -0.46 |
| C3 C4 | -1.42 | -0.90 | -1.06 | 0.42 |
| O1 O2 | 1.15 | -0.63 | -0.37 | -1.06 |
| T3 T4 | -0.32 | 1.17 | 0.30 | 0.17 |

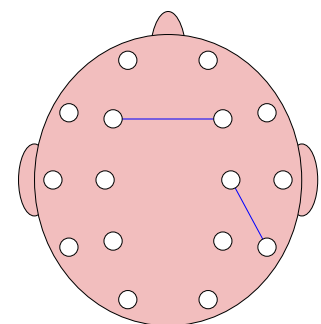
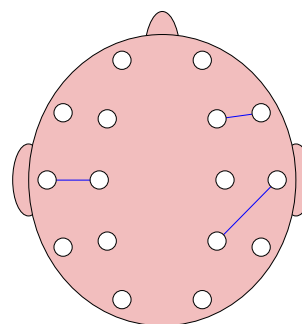
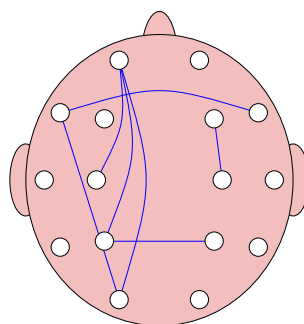
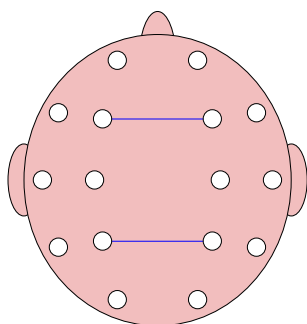
| | DELTA | THETA | ALPHA | BETA |
|-------|-------|-------|-------|-------|
| F3 F4 | -2.56 | -1.77 | -1.22 | -2.69 |
| P3 P4 | -2.31 | -2.09 | -1.00 | 0.44 |
| F7 F8 | 0.71 | -2.33 | -0.46 | -1.34 |
| T5 T6 | 0.11 | 0.69 | -0.25 | 0.16 |

Delta (1.0 - 4.0 Hz)

Theta (4.0 - 8.0 Hz)

Alpha (8.0 - 12.0 Hz)

Beta (12.0 - 25.0 Hz)



- ———— +
Z-Score >= 1.96

- ———— +
Z-Score >= 2.58

- ———— +
Z-Score >= 3.09